

The Perfect Move



Perfect user experience!

During the development and technological stages we focus on achieving a perfect user experience. The solutions are designed for applicability purposes, simple handling and smooth operation of mechanical parts. It is simply about feeling good and trusting the material, being the result of in-depth studies of the customers' habits and market specifics.



The quality is in the details!

The customer frequently has questions as to why an individual product differs from other products. This difference is usually not visible at first glance and is normally indiscernible to the eye. But upon closer inspection of the precision mechanical parts and sensibly designed details we start to get the idea of where the sense of superiority comes from.



The art of flexibility!

Every part of the world is unique. Take, for example, climate differences or simply the construction methods, different life styles and application methods. We excel in quickly adapting to such circumstances as early as in the planning stages. Qualifications in development and production allow us to follow the demands of individual markets, make proper preparations and keep the quality superior to everything else.

ARX[®]

by KOVINOPLASTIKA LOŽ

ARX is a registered trademark of Kovinoplastika Lož d.o.o.

KOVINOPLASTIKA LOŽ d.o.o.
Lož, Cesta 19. oktobra 57
1386 Stari trg pri Ložu,
Slovenija

Telephone: +386 170 95 368

www.kovinoplastika.si
info@kovinoplastika.si

ARX door

The Perfect Move



ARX[®]

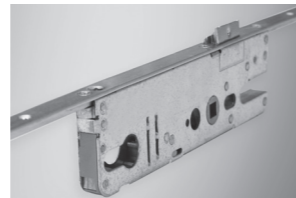
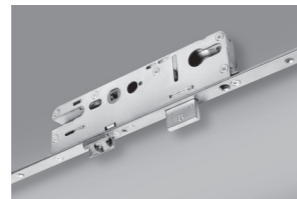
HIGHLIGHTS / FEATURES

- *durability*
- *adaptation*
- *anti-corrosion sustainability*

door LOCKS

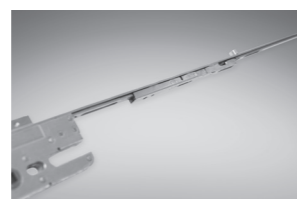
HANDLE OPERATED LOCK

- Backset 25 - 65 mm
- Distance between cylinder and handle 92, 70 mm
- Application range 1800 - 2500 mm
- Face plate 16, 20, 22 mm
- Handle / Handle option
- Frame parts - single or one piece keep
- Pvc, Timber, Alu related frame parts
- Closing point: R cam, RS cam, H hook and combination
- Opposing hooks with anti-saw steel fragments
- Main lock with latch and dead bolt, or without latch and dead bolt
- Possibility to combine with accessories
- Optional combine with T&T parts



AUTOMATIC LOCK

- Automatic closing function
- Prevent door bending in a closed position
- Backset 35, 45 mm
- Application range 1900 - 2200 mm
- Distance between cylinder and handle 92 mm
- Closing point RS cam with combination of hooks
- Frame parts available with one piece striker



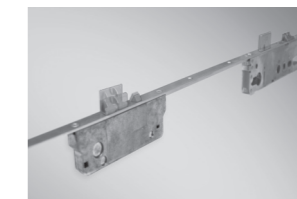
USE / FUNCTIONALITY

- *easy handling*
- *wide range application*
- *environment friendly*

door LOCKS

COMFORT

- Backset 35, 45 mm
- Application range 1900 - 2200 mm
- Distance between cylinder and handle 92 mm
- Cylinder operated
- Push bar / handle option and handle / handle option
- Comfort closing function
- Universal activation trigger
- Adjustable L/R orientation
- Block latch in a closed position
- Available combination with one piece striker



PORTAL

- Backset 35, 45 mm
- Face plate on customer demand
- Cylinder operated
- Available with latch and dead bolt

