



seidensticker



# Business

SHIRTS & BLOUSES .....	268
KNITWEAR .....	305
BUSINESS & TROUSERS .....	308



1 London  
B&C | 01.0580



2 Milano /women  
B&C | 01.0520



white



black



deep red



navy

### 1 London

B&amp;C 01.0580

#### Poplin Stretch Shirt long-sleeve

135g/m<sup>2</sup>, 97% combed cotton, 3% elastane

Tailored fit, buttons tone-in-tone, 2 spare buttons, without breast pocket, without folds on back for embroidery, cotton/elastane mono-stretch, 40° washable

S - M - L - XL - XXL

☞ 20 ☐ 1

### 2 Milano /women

B&amp;C 01.0520

#### Poplin Stretch Blouse 3/4 Sleeve

135g/m<sup>2</sup>, 97% combed cotton, 3% elastane

Tailored fit, 2-button cuff, buttons tone-in-tone, cotton/elastane mono-stretch, plain back for embroidery, 40° washable

XS - S - M - L - XL - XXL

☞ 20 ☐ 1



3 Black Tie LSL /men  
B&C | 01.0P21



4 Black Tie LSL /women  
B&C | 01.0P23



white



black



coffee bean



luxurious red

### 3 Black Tie LSL /men

B&amp;C 01.0P21

#### Poplin Stretch Shirt long-sleeve

135g/m<sup>2</sup>, 97% combed cotton, 3% elastane, poplin

Cut-away collar with 2 buttons, square, 2 buttons adjustable cuffs with additional buttonholes for cufflink, rounded bottom hem with square-shaped side reinforcements, horizontal last buttonhole, 2 spare buttons, cross-stitched mother-of-pearl buttons tone-in-tone, darts on back, can also be worn over the pants, moderate length

S - M - L - XL - XXL - 3XL - 4XL

☞ 10 ☐ 1

### 4 Black Tie LSL /women

B&amp;C 01.0P23

#### Poplin Stretch Blouse long-sleeve

135g/m<sup>2</sup>, 97% combed cotton, 3% elastane, poplin

Soft fused feminine collar, square, 2 buttons adjustable cuffs with additional buttonholes for cufflink, rounded hem, matching mother-of-pearl buttons sewn in cross-stitch, horizontal last buttonhole, 1 spare button, darts on the chest, front and back, can also be worn over the pants, soft poplin material with stretch

XS - S - M - L - XL - XXL - 3XL - 4XL

☞ 10 ☐ 1



5 Heritage LSL /men  
B&C | 01.0P41



6 Heritage LSL /women  
B&C | 01.0P43



white



black



deep red



blue chip

### 5 Heritage LSL /men

B&amp;C 01.0P41

#### Poplin Shirt long-sleeve

125g/m<sup>2</sup>, 100% combed cotton

Cut-away boned collar and elastic fusing, squared cuff gauntlets with button, rounded bottom hem with square-shaped side reinforcements, straight cuff with exclusive 3 closure option (classic white tie with or without cufflinks), matching mother-of-pearl buttons sewn in cross-stitch, horizontal last buttonhole, 2 spare buttons, left chest pocket, double folded seam at the side and on the sleeves, back yoke with 2 side pleats and quilted seams, easy-care, tie fix, easy care, 50° washable

S - M - L - XL - XXL - 3XL - 4XL

☞ 10 ☐ 1

### 6 Heritage LSL /women

B&amp;C 01.0P43

#### Poplin Blouse long-sleeve

125g/m<sup>2</sup>, 100% combed cotton

Tailored cut with darts on the chest and back, soft fused feminine collar, straight double button cuff with french cuff option, cuff gauntlets, rounded hem, matching mother-of-pearl buttons sewn in cross-stitch, horizontal last buttonhole, 1 spare button, easy-care, easy care, 50° washable

XS - S - M - L - XL - XXL - 3XL - 4XL

☞ 10 ☐ 1



**1 DNM Vision /men**

B&C 01.8589

**Denim Twill Shirt long-sleeve**

185g/m<sup>2</sup>, 100% cotton-denim-twill, garment washed  
Cut-away collar, semi concealed button-placket, sleeve tab to fasten the rolled up sleeves, 3-way stitched yoke on chest and the back, rounded hem, buttons tone-in-tone, horizontal last buttonhole, decorative multistitch lines tone-in-tone on the back of the collar

S - M - L - XL - XXL

☞20 ☐1

Denim Twill



Denim Twill



**2 DNM Vision /women**

B&C 01.8689

**Denim Twill Blouse long-sleeve**

185g/m<sup>2</sup>, 100% cotton-denim-twill, garment washed  
Feminine collar with an extended flap on first button and mini-patch made of reversed denim, back collar made of two parts, button-placket with zigzag stitch tone-in-tone, 2-way stitched yoke at the front on shoulder, 2-button cuff, buttons tone-in-tone, spare button made of antique brass on the left cuff, darts on chest and back, bottom sides with contrasting gusset

XS - S - M - L - XL - XXL

☞20 ☐1



deep blue denim

**1 DNM Vision /men**  
B&C | 01.8589



**2 DNM Vision /women**  
B&C | 01.8689



**3 Sharp LSL /men**

B&C 01.0T81

**Twill Shirt long-sleeve**

130g/m<sup>2</sup>, 100% combed cotton, twill  
Semi boned cut-away collar with elastic fusing, square, 2 buttons adjustable cuffs with additional buttonholes for cufflink, rounded bottom hem with square-shaped side reinforcements, matching mother-of-pearl buttons sewn in cross-stich, horizontal last buttonhole, 2 spare buttons, left chest pocket, double folded seam at the side and on the sleeves, back yoke with 2 side pleats and quilted seams, soft surface, B&C tie fix©, easy care, 50° washable

S - M - L - XL - XXL - 3XL - 4XL

☞10 ☐1



white



black



dark grey



deep red



navy



**3 Sharp LSL /men**  
B&C | 01.0T81



**4 Sharp LSL /women**  
B&C | 01.0T83



**4 Sharp LSL /women**

B&C 01.0T83

**Twill Blouse long-sleeve**

130g/m<sup>2</sup>, 100% combed cotton, twill  
Tailored cut with darts on chest, front and back, soft fused feminine collar, square edged adjustable cuff with additional buttonholes for cufflink, rounded hem, matching mother-of-pearl buttons sewn in cross-stich, horizontal last buttonhole, 1 spare button, soft surface, easy care, 50° washable

XS - S - M - L - XL - XXL - 3XL - 4XL

☞10 ☐1

**5 Sharp SSL /men**

B&C 01.0T82

**Twill Shirt short-sleeve**

130g/m<sup>2</sup>, 100% combed cotton, twill  
Semi boned cut-away collar with elastic fusing, folded sleeve hem with double stitching, rounded bottom hem with square-shaped side reinforcements, matching mother-of-pearl buttons sewn in cross-stich, horizontal last buttonhole, 2 spare buttons, left chest pocket, double folded seam at the side and on the sleeves, back yoke with 2 side pleats and quilted seams, soft surface, B&C tie fix©, easy care, 50° washable

S - M - L - XL - XXL - 3XL - 4XL

☞10 ☐1



white



black



dark grey



deep red



navy



**5 Sharp SSL /men**  
B&C | 01.0T82



**6 Sharp SSL /women**  
B&C | 01.0T84



**6 Sharp SSL /women**

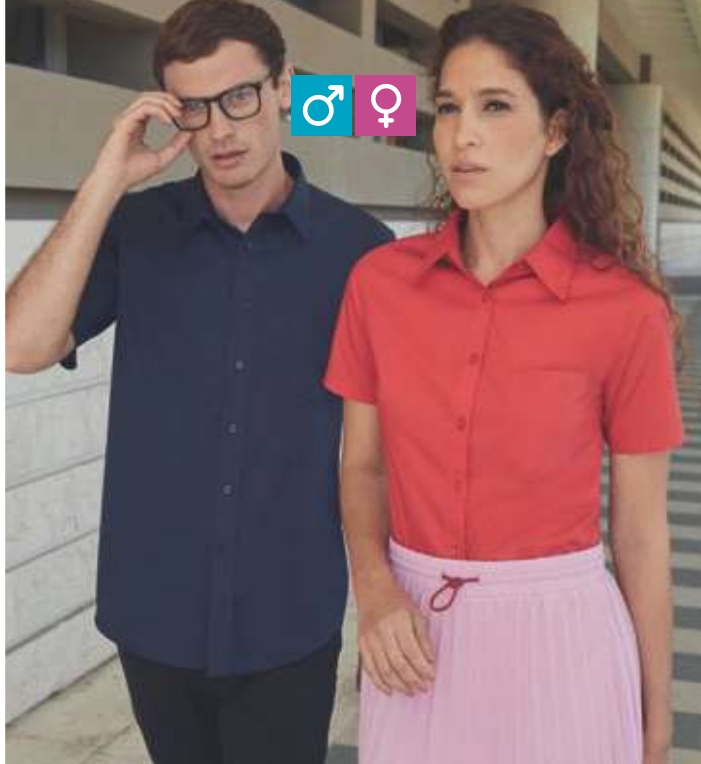
B&C 01.0T84

**Twill Blouse short-sleeve**

130g/m<sup>2</sup>, 100% combed cotton, twill  
Tailored cut with darts on chest, front and back, soft fused feminine collar, folded sleeve hem, rounded hem, matching mother-of-pearl buttons sewn in cross-stich, horizontal last buttonhole, 1 spare button, soft surface, easy care, 50° washable

XS - S - M - L - XL - XXL - 3XL - 4XL

☞10 ☐1



**1 Poplin Shirt SSL**  
F.O.L. | 16.5116

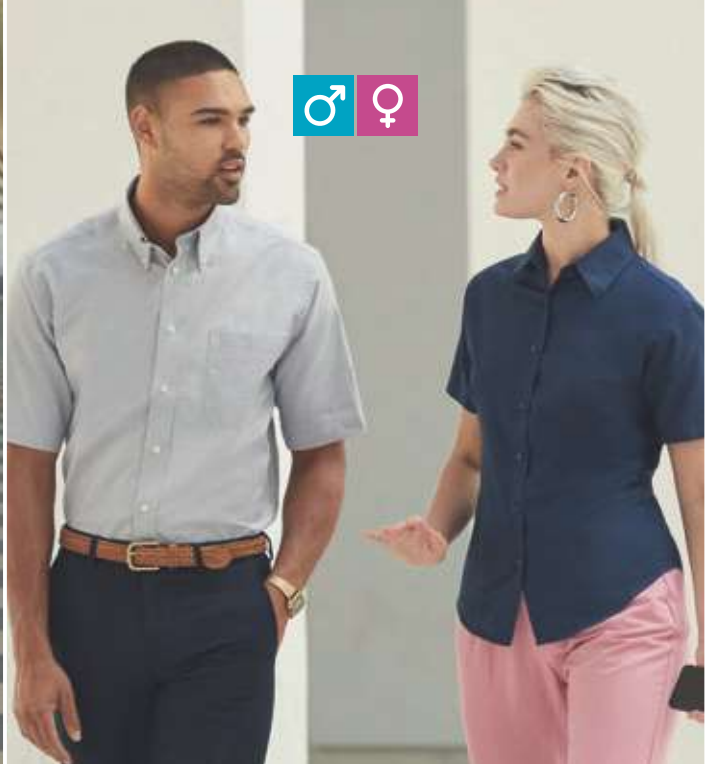


**2 Lady-Fit Poplin Shirt SSL**  
F.O.L. | 16.5014



**Poplin Shirt short-sleeve**  
120g/m<sup>2</sup>, 55% cotton, 45% polyester  
Boned classic collar, rounded hem, buttons tone-in-tone, breast pocket  
S - M - L - XL - XXL - 3XL  
👉 12 📦 1

**Poplin Blouse short-sleeve**  
120g/m<sup>2</sup>, 55% cotton, 45% polyester  
Rounded hem, buttons tone-in-tone, breast pocket, darts on chest and back for good fit  
XS - S - M - L - XL - XXL - 3XL  
👉 12 📦 1



**3 Oxford Shirt SSL**  
F.O.L. | 16.5112



**4 Lady-Fit Oxford Shirt SSL**  
F.O.L. | 16.5000



**Oxford Shirt short-sleeve**  
135g/m<sup>2</sup>, 70% cotton, 30% polyester  
Button down collar, rounded hem, breast pocket, durable oxford fabric  
S - M - L - XL - XXL - 3XL  
👉 12 📦 1

**Oxford Blouse short-sleeve**  
135g/m<sup>2</sup>, 70% cotton, 30% polyester  
Tailored fit, classic collar, rounded hem, without breast pocket, darts on chest and back  
XS - S - M - L - XL - XXL - 3XL  
👉 12 📦 1



**5 Poplin Shirt LSL**  
F.O.L. | 16.5118



**6 Lady-Fit Poplin Shirt LSL**  
F.O.L. | 16.5012



**Poplin Shirt long-sleeve**  
120g/m<sup>2</sup>, 55% cotton, 45% polyester  
Classic collar, rounded hem, buttons tone-in-tone, breast pocket  
S - M - L - XL - XXL - 3XL  
👉 12 📦 1

**Poplin Blouse long-sleeve**  
120g/m<sup>2</sup>, 55% cotton, 45% polyester  
Rounded hem, buttons tone-in-tone, breast pocket, darts on chest and back for good fit  
XS - S - M - L - XL - XXL - 3XL  
👉 12 📦 1



**7 Oxford Shirt LSL**  
F.O.L. | 16.5114



**8 Lady-Fit Oxford Shirt LSL**  
F.O.L. | 16.5002



**Oxford Shirt long-sleeve**  
135g/m<sup>2</sup>, 70% cotton, 30% polyester  
Button down collar, sleeve cuffs with cuffs, rounded hem, breast pocket, durable oxford fabric  
S - M - L - XL - XXL - 3XL  
👉 12 📦 1

**Oxford Blouse long-sleeve**  
135g/m<sup>2</sup>, 70% cotton, 30% polyester  
Tailored fit, classic collar, rounded hem, darts on chest and back  
XS - S - M - L - XL - XXL - 3XL  
👉 12 📦 1

**1 JN 682**

James & Nicholson 02.0682

**Micro-Twill Shirt long-sleeve**

120g/m<sup>2</sup>, 100% cotton  
Lightly tailored fit, rounded hem, breast pocket, back folds on back yoke, non-iron  
S - M - L - XL - XXL - 3XL - 4XL  
👉 20 📦 5



white



black



light pink



light blue



**1 JN 682**  
James & Nicholson | 02.0682



**2 JN 681**  
James & Nicholson | 02.0681

**3 JN 684**

James & Nicholson 02.0684

**Micro-Twill Shirt short-sleeve**

120g/m<sup>2</sup>, 100% cotton  
Lightly tailored fit, rounded hem, breast pocket, back folds on back yoke, non-iron  
S - M - L - XL - XXL - 3XL - 4XL  
👉 20 📦 5



white



black



light pink



light blue



**3 JN 684**  
James & Nicholson | 02.0684

**4 JN 683**  
James & Nicholson | 02.0683

**4 JN 683**

James & Nicholson 02.0683

**Micro-Twill Blouse short-sleeve**

120g/m<sup>2</sup>, 100% cotton  
Tailored feminine cut, rounded hem, back folds on back yoke, non-iron  
XS - S - M - L - XL - XXL - 3XL  
👉 20 📦 5



white



black



light pink



light blue

**5 JN 690**

James & Nicholson 02.0690

**Herringbone Shirt long-sleeve**

130g/m<sup>2</sup>, 84% cotton, 16% polyester  
Lightly tailored fit, rounded hem, back folds on back yoke, easy care  
S - M - L - XL - XXL - 3XL - 4XL  
👉 20 📦 5



white



light blue



Herringbone

Herringbone

**5 JN 690**  
James & Nicholson | 02.0690

**6 JN 689**  
James & Nicholson | 02.0689

**6 JN 689**

James & Nicholson 02.0689

**Herringbone Shirt long-sleeve**

130g/m<sup>2</sup>, 84% cotton, 16% polyester  
Tailored feminine cut, rounded hem, back folds on back yoke, easy care  
XS - S - M - L - XL - XXL - 3XL  
👉 20 📦 5



**1 JN 686**  
James & Nicholson | 02.0686



**2 JN 685**  
James & Nicholson | 02.0685



white



black



silver



light blue

**1 JN 686**  
James & Nicholson | 02.0686

**Oxford Shirt long-sleeve**

130g/m<sup>2</sup>, 70% cotton, 30% polyester

Lightly tailored fit, rounded hem, chest pocket 12x14cm, back folds on back yoke, easy care

S - M - L - XL - XXL - 3XL - 4XL

☞ 20 ☞ 5

**2 JN 685**  
James & Nicholson | 02.0685

**Oxford Blouse long-sleeve**

130g/m<sup>2</sup>, 70% cotton, 30% polyester

Tailored feminine cut, rounded hem, back folds on back yoke, easy care

XS - S - M - L - XL - XXL - 3XL

☞ 20 ☞ 5



**3 JN 688**  
James & Nicholson | 02.0688



**4 JN 687**  
James & Nicholson | 02.0687



white



black



silver



light blue

**3 JN 688**  
James & Nicholson | 02.0688

**Oxford Shirt short-sleeve**

130g/m<sup>2</sup>, 70% cotton, 30% polyester

Lightly tailored fit, rounded hem, chest pocket 12x14cm, back folds on back yoke, easy care

S - M - L - XL - XXL - 3XL - 4XL

☞ 20 ☞ 5

**4 JN 687**  
James & Nicholson | 02.0687

**Oxford Blouse short-sleeve**

130g/m<sup>2</sup>, 70% cotton, 30% polyester

Tailored feminine cut, rounded hem, back folds on back yoke, easy care

XS - S - M - L - XL - XXL - 3XL

☞ 20 ☞ 5



white



black



carbon



steel



light grey



stone



brown



irish green



lime green



yellow



orange



tomato



red



wine



light pink



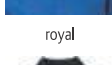
light blue



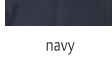
aqua



royal



navy



turquoise

**1 JN 678**

James & Nicholson | 02.0678

**Poplin Shirt long-sleeve**

105g/m<sup>2</sup>, 65% polyester, 35% cotton

Lightly tailored fit, rounded hem, buttons tone-in-tone, chest pocket 12x14cm, back folds on back yoke, easy care

S - M - L - XL - XXL - 3XL - 4XL

👕 20 📦 5

**2 JN 677**

James & Nicholson | 02.0677

**Poplin Blouse long-sleeve**

105g/m<sup>2</sup>, 65% polyester, 35% cotton

Tailored fit, rounded hem, buttons tone-in-tone, easy care

XS - S - M - L - XL - XXL - 3XL

👕 20 📦 5

**3 JN 680**

James & Nicholson | 02.0680

**Poplin Shirt short-sleeve**

105g/m<sup>2</sup>, 65% polyester, 35% cotton

Lightly tailored fit, rounded hem, chest pocket 12x14cm, back folds on back yoke, easy care

S - M - L - XL - XXL - 3XL - 4XL

👕 20 📦 5

**4 JN 679**

James & Nicholson | 02.0679

**Poplin Blouse short-sleeve**

105g/m<sup>2</sup>, 65% polyester, 35% cotton

Tailored fit, rounded hem, easy care

XS - S - M - L - XL - XXL - 3XL

👕 20 📦 5

**1 JN 678**

James & Nicholson | 02.0678



**2 JN 677**

James & Nicholson | 02.0677



**3 JN 680**

James & Nicholson | 02.0680



**4 JN 679**

James & Nicholson | 02.0679





**1 JN 617**  
James & Nicholson | 02.0617



**2 JN 616**  
James & Nicholson | 02.0616



**1 JN 617**  
James & Nicholson | 02.0617  
**Poplin Plaid Shirt long-sleeve**  
100g/m<sup>2</sup>, 100% cotton  
Lightly tailored fit, uni-colored inserts on the collar and cuff, rounded hem, chest pocket 13x15cm, back folds on back yoke, easy care, high-quality easy to iron poplin quality  
S - M - L - XL - XXL - 3XL  
☎ 20 ☑ 5

**2 JN 616**  
James & Nicholson | 02.0616  
**Poplin Plaid Blouse long-sleeve**  
100g/m<sup>2</sup>, 100% cotton  
Tailored fit, uni-colored inserts on the collar and cuff, rounded hem, easy care, high-quality easy to iron poplin quality  
XS - S - M - L - XL - XXL  
☎ 20 ☑ 5



**3 JN 619**  
James & Nicholson | 02.0619



**4 JN 618**  
James & Nicholson | 02.0618



**3 JN 619**  
James & Nicholson | 02.0619  
**Poplin Shirt with Checked Insets**  
100g/m<sup>2</sup>, 100% cotton  
Lightly tailored fit, check inserts on the collar and cuff, rounded hem, breast pocket, back folds on back yoke, easy care, high-quality easy to iron poplin quality  
S - M - L - XL - XXL - 3XL  
☎ 20 ☑ 5

**4 JN 618**  
James & Nicholson | 02.0618  
**Poplin Blouse with Checked Insets**  
100g/m<sup>2</sup>, 100% cotton  
Tailored fit, check inserts on the collar and cuff, rounded hem, easy care, high-quality easy to iron poplin quality  
XS - S - M - L - XL - XXL  
☎ 20 ☑ 5



**5 JN 674**  
James & Nicholson | 02.0674



**6 JN 673**  
James & Nicholson | 02.0673



**5 JN 674**  
James & Nicholson | 02.0674  
**Poplin Shirt Dots**  
100g/m<sup>2</sup>, 100% cotton  
Lightly tailored fit, classic cut, classic collar, cuffs and collar inside in contrasting color, rounded hem, back yoke with pleats, all-over print, easy care, easy iron  
S - M - L - XL - XXL - 3XL  
☎ 20 ☑ 5

**6 JN 673**  
James & Nicholson | 02.0673  
**Poplin Blouse Dots**  
100g/m<sup>2</sup>, 100% cotton  
Tailored feminine cut, classic collar, cuffs and collar inside in contrasting color, rounded hem, dividing seams, all-over print, easy care, easy iron  
XS - S - M - L - XL - XXL  
☎ 20 ☑ 5

**1 JN 637**

James & Nicholson 02.0637

**Poplin Checkered Traditional Shirt**

100g/m<sup>2</sup>, 100% cotton

Tailored fit, roll-up sleeves with button tab, rounded hem, costume buttons made of faux horn, easy care, high-quality easy to iron poplin quality

XS - S - M - L - XL - XXL

☎ 20 ☑ 5



green/white



red/white



royal/white

**2 JN 638**

James & Nicholson 02.0638

**Poplin Checkered Traditional Shirt**

100g/m<sup>2</sup>, 100% cotton

Lightly tailored fit, roll-up sleeves with button tab, rounded hem, costume buttons made of faux horn, breast pocket, 2 back folds, easy care, high-quality easy to iron poplin quality

S - M - L - XL - XXL - 3XL

☎ 20 ☑ 5



green/white



red/white



purple/white



royal/white

**1 JN 638**

James & Nicholson | 02.0638



**2 JN 637**

James & Nicholson | 02.0637



**3 JN 672**

James & Nicholson 02.0672

**Poplin Shirt "Wings"**

100g/m<sup>2</sup>, 100% cotton

Lightly tailored fit, classic cut, classic collar, cuffs and collar inside in contrasting color, rounded hem, back yoke with pleats, all-over print, easy care, easy iron

S - M - L - XL - XXL - 3XL

☎ 20 ☑ 5



white/red



titan/white



blue/white

**4 JN 671**

James & Nicholson 02.0671

**Poplin Blouse "Wings"**

100g/m<sup>2</sup>, 100% cotton

Tailored feminine cut, classic collar, cuffs and collar inside in contrasting color, rounded hem, dividing seams, all-over print, easy care, easy iron

XS - S - M - L - XL - XXL

☎ 20 ☑ 5



**3 JN 672**

James & Nicholson | 02.0672



**4 JN 671**

James & Nicholson | 02.0671



**5 JN 670**

James & Nicholson 02.0670

**Poplin Shirt "Diamonds"**

100g/m<sup>2</sup>, 100% cotton

Classic, slightly tailored cut, classic collar, cuffs and collar inside in contrasting color, rounded hem, back yoke with pleats, all-over print, easy care, easy iron

S - M - L - XL - XXL - 3XL

☎ 20 ☑ 5



white/red



white/light blue



navy/white

**6 JN 669**

James & Nicholson 02.0669

**Poplin Blouse "Diamonds"**

100g/m<sup>2</sup>, 100% cotton

Tailored feminine cut, classic collar, cuffs and collar inside in contrasting color, rounded hem, dividing seams, all-over print, easy care, easy iron

XS - S - M - L - XL - XXL

☎ 20 ☑ 5



**5 JN 670**

James & Nicholson | 02.0670



**6 JN 669**

James & Nicholson | 02.0669





**1 JN 607**  
James & Nicholson | 02.0607

**2 JN 609**  
James & Nicholson | 02.0609



**1 JN 607**  
James & Nicholson | 02.0607

**Business Twill Shirt short-sleeve**  
120g/m<sup>2</sup>, 100% cotton  
New Kent collar, buttons tone-in-tone, twill quality, easy care, back yoke and breast pocket  
S - M - L - XL - XXL - 3XL  
👖 20 📦 5

**2 JN 609**  
James & Nicholson | 02.0609

**Business Twill Blouse short-sleeve**  
120g/m<sup>2</sup>, 100% cotton  
Easy-care short-sleeve blouse, tailored fit, open collar shape, rounded hem, buttons tone-in-tone, twill quality, easy care  
XS - S - M - L - XL - XXL  
👖 20 📦 5



**3 JN 606**  
James & Nicholson | 02.0606

**4 JN 608**  
James & Nicholson | 02.0608

**Business Twill Shirt long-sleeve**  
120g/m<sup>2</sup>, 100% cotton  
New Kent collar, adjustable cuffs, buttons tone-in-tone, twill quality, easy care, back yoke and breast pocket  
S - M - L - XL - XXL - 3XL  
👖 20 📦 5

**Business Twill Blouse long-sleeve**  
120g/m<sup>2</sup>, 100% cotton  
Tailored fit, open collar shape, rounded hem, buttons tone-in-tone, twill quality, easy care  
XS - S - M - L - XL - XXL  
👖 20 📦 5



**5 JN 615**  
James & Nicholson | 02.0615

**Twill Blouse long-sleeve**  
120g/m<sup>2</sup>, 100% cotton  
Longer fit, feminine silhouette with darts on the chest and back, closed collar shape, quilted button-placket, 2-layer shoulder yoke, 1-button cuff, round hem, easy care  
XS - S - M - L - XL - XXL  
👖 20 📦 5

**1 JN 642**

James & Nicholson 02.0642

**Poplin Business Shirt long-sleeve**

105g/m<sup>2</sup>, 50% cotton, 50% polyester

Classic, slightly tailored cut, classic collar, cuff on sleeves, rounded hem, breast pocket, back folds on back yoke, easy-care fabric, easy care, easy iron, 60° washable

S - M - L - XL - XXL - 3XL - 4XL - 5XL - 6XL

☎ 20 ☑ 5



white



black



carbon



steel



lime green



yellow



orange



red



wine



royal



navy

**3 JN 644**

James & Nicholson 02.0644

**Poplin Business Shirt short-sleeve**

105g/m<sup>2</sup>, 50% cotton, 50% polyester

Classic, slightly tailored cut, classic collar, rounded hem, breast pocket, back folds on back yoke, easy-care fabric, easy care, easy iron, 60° washable

S - M - L - XL - XXL - 3XL - 4XL - 5XL - 6XL

☎ 20 ☑ 5

**4 JN 643**

James & Nicholson 02.0643

**Poplin Business Blouse short-sleeve**

105g/m<sup>2</sup>, 50% cotton, 50% polyester

Tailored feminine cut, classic collar, rounded hem, easy-care fabric, easy care, easy iron, 60° washable

XS - S - M - L - XL - XXL - 3XL

☎ 20 ☑ 5

**5 JN 648**

James & Nicholson 02.0648

**Poplin Shirt "Plain"**

100g/m<sup>2</sup>, 100% cotton

Classic, slightly tailored cut, classic collar, rounded hem, contrasting buttons, back yoke with pleats, cuffs and collar inside with patterned fabric, easy care, easy iron

S - M - L - XL - XXL - 3XL

☎ 20 ☑ 5

**6 JN 647**

James & Nicholson 02.0647

**Poplin Blouse "Plain"**

100g/m<sup>2</sup>, 100% cotton

Tailored feminine cut, classic collar, rounded hem, contrasting buttons, dividing seams, cuffs and collar inside with patterned fabric, easy care, easy iron

XS - S - M - L - XL - XXL

☎ 20 ☑ 5



white/  
titan white



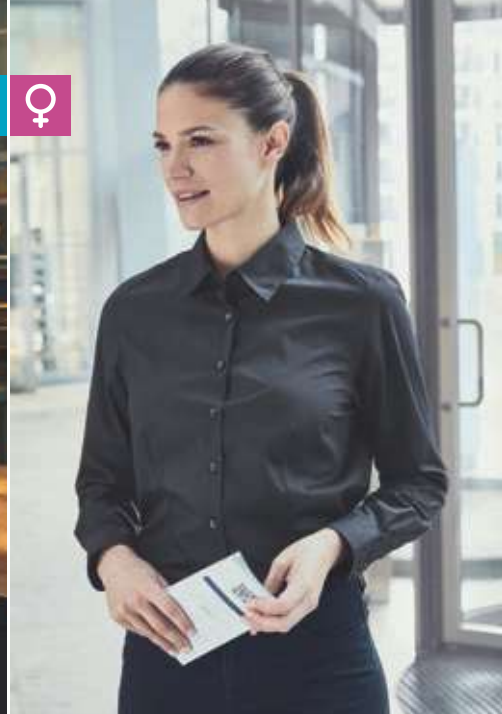
white/white  
light blue



white/  
navy white



**1 JN 642**  
James & Nicholson | 02.0642



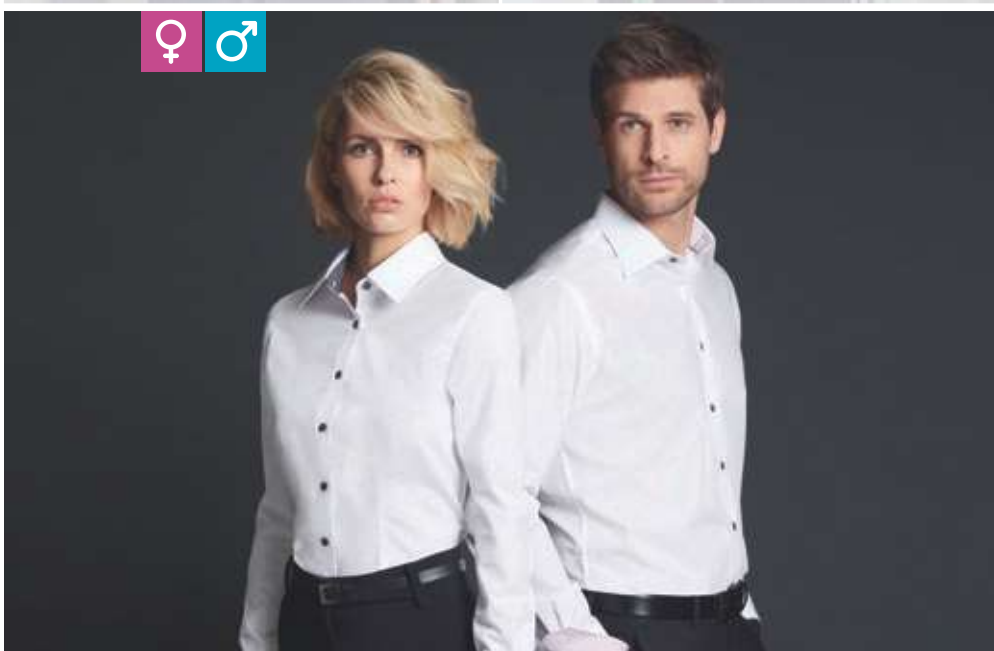
**2 JN 641**  
James & Nicholson | 02.0641



**3 JN 644**  
James & Nicholson | 02.0644



**4 JN 643**  
James & Nicholson | 02.0643



**5 JN 647**  
James & Nicholson | 02.0647

**6 JN 648**  
James & Nicholson | 02.0648

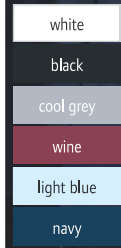


**1 JN 629**  
James & Nicholson | 02.0629

**2 JN 628**  
James & Nicholson | 02.0628

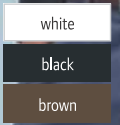
**1 JN 629**  
James & Nicholson 02.0629  
**Denim Shirt**  
135g/m<sup>2</sup>, 100% cotton  
Rounded hem, 2 patch breast pockets, eye-catching back-stitch seams, classic back yoke  
S - M - L - XL - XXL - 3XL  
€20 5

**2 JN 628**  
James & Nicholson 02.0628  
**Denim Blouse**  
85g/m<sup>2</sup>, 100% cotton  
Rounded hem, press studs in mother-of-pearl look, 2 patch breast pockets, eye-catching back-stitch seams, classic back yoke  
XS - S - M - L - XL - XXL  
€20 5



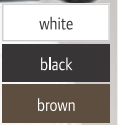
**3 JN 191**  
James & Nicholson | 02.0191

**Poplin Shirt Classic Fit long-sleeve**  
105g/m<sup>2</sup>, 100% cotton  
Lightly tailored fit, italian button-placket, adjustable cuffs, breast pocket, high-quality poplin fabric, soft and skin-friendly, easy care, very easy to iron  
S - M - L - XL - XXL - 3XL  
€20 5



**4 JN 193**  
James & Nicholson | 02.0193

**Stretch Slim Fit Shirt long-sleeve**  
95g/m<sup>2</sup>, 67% cotton, 30% polyamide, 3% elastane  
Tailored fit, small soft collar, french button-placket, adjustable cuffs, fine, elastic and skin-friendly high quality poplin fabric, easy care  
S - M - L - XL - XXL - 3XL  
€20 5



**5 JN 645**  
James & Nicholson | 02.0645

**Poplin Slim Fit Blouse**  
95g/m<sup>2</sup>, 67% cotton, 30% polyamide, 3% elastane  
Tailored fit, small soft collar, darts on the front and back, fine, elastic and skin-friendly high quality poplin fabric, easy-care, easy care  
XS - S - M - L - XL - XXL  
€20 5

**1 K551**

Kariban 20.K551

**Shirt "Ace" short-sleeve**

110g/m<sup>2</sup>, 65% polyester, 35% cotton

Stiffened collar, rounded hem, buttons tone-in-tone, 1 spare button, breast pocket, back yoke with 2 side pleats

S - M - L - XL - XXL - 3XL - 4XL - 5XL - 6XL

👉12 📦1



white



black



zinc



silver



brown



burnt lime



**2 K548**

Kariban 20.K548

**Blouse "Judith" short-sleeve**

110g/m<sup>2</sup>, 65% polyester, 35% cotton

Classic buttonless collar, rounded hem, buttons tone-in-tone, 1 spare button, left chest pocket, easy-care fabric

XS - S - M - L - XL - XXL - 3XL - 4XL

👉12 📦1

**1 K551**

Kariban | 20.K551



**2 K548**

Kariban | 20.K548



**3 K545**

Kariban 20.K545

**Shirt "Jofrey" long-sleeve**

110g/m<sup>2</sup>, 65% polyester, 35% cotton

Stiffened collar, mitred cuffs, rounded hem, buttons tone-in-tone, 2 spare buttons, breast pocket, back yoke with 2 side pleats

S - M - L - XL - XXL - 3XL - 4XL - 5XL - 6XL

👉12 📦1



orange



classic red



wine



bright sky



navy



bright turquoise



**3 K549**

Kariban | 20.K549



**4 K545**

Kariban | 20.K545



**4 K549**

Kariban 20.K549

**Blouse "Jessica" long-sleeve**

110g/m<sup>2</sup>, 65% polyester, 35% cotton

Classic buttonless collar, rounded cuffs, adjustable with 2 buttons, rounded hem, buttons tone-in-tone, 1 spare button, left chest pocket, easy-care fabric

XS - S - M - L - XL - XXL - 3XL - 4XL

👉12 📦1

**KARIBAN**



**5 K519**

Kariban 20.K519

**Denim Shirt long-sleeve**

130g/m<sup>2</sup>, 100% cotton

Tailored fit, back and front yoke, cuffs with press studs, press studs, 2 breast pockets with press studs and flaps

S - M - L - XL - XXL - 3XL

👉25 📦1



**5 K519**

Kariban | 20.K519

**6 K518**

Kariban | 20.K518

**6 K518**

Kariban 20.K518

**Denim Blouse long-sleeve**

130g/m<sup>2</sup>, 100% cotton

Tailored fit, back and front yoke, cuffs with press studs, rounded hem, press studs, 2 breast pockets with press studs and flaps

XS - S - M - L - XL - XXL

👉25 📦1



blue jean



**1 K589**  
Kariban | 20.K589



**2 K588**  
Kariban | 20.K588

**1 K589**  
Kariban 20.K589

**Linen Blouse long-sleeve**  
130g/m<sup>2</sup>, 55% linen, 45% cotton  
Roll-up sleeves with button tab, contrasting buttons, 1 spare button, decorative stitching on sleeves and cuffs  
XS - S - M - L - XL - XXL  
👕 20 📦 1

**2 K588**  
Kariban 20.K588

**Linen Shirt long-sleeve**  
130g/m<sup>2</sup>, 55% linen, 45% cotton  
Roll-up sleeves with button tab, contrasting buttons, 1 spare button, decorative stitching on sleeves and cuffs  
S - M - L - XL - XXL - 3XL  
👕 20 📦 1



white



navy



**3 K537**  
Kariban | 20.K537

**Non-iron shirt long-sleeve**  
120g/m<sup>2</sup>, 100% cotton-twill  
Reinforced button down collar, edged button-placket with self-colored buttons, mitred cuff with 2 buttons and 1 button on the gauntlet, rounded hem, 2 spare buttons, left patch breast pocket, back yoke with 2 side pleats, non-iron  
S - M - L - XL - XXL - 3XL - 4XL  
👕 12 📦 1



**4 K539**  
Kariban | 20.K539

**Non-iron Shirt short-sleeve**  
120g/m<sup>2</sup>, 100% cotton-micro-twill  
Reinforced button down collar, edged button-placket with self-colored buttons, rounded hem, 2 spare buttons, left patch breast pocket, back yoke with 2 side pleats, non-iron  
S - M - L - XL - XXL - 3XL - 4XL  
👕 12 📦 1



**5 K522**  
Kariban | 20.K522

**Non-iron shirt long-sleeve**  
120g/m<sup>2</sup>, 100% cotton-micro-twill  
Buttonless collar, sleeves lined with double seams, angle cut adjustable cuffs, rounded hem, buttons tone-in-tone, 2 spare buttons, high-quality lap seam processing, double back yoke, non-iron  
XS - S - M - L - XL - XXL - 3XL - 4XL  
👕 12 📦 1



## 1 K591

Kariban | 20.K591

### Poplin Blouse long-sleeve "Safari"

120g/m<sup>2</sup>, 100% cotton

Roll-up sleeves with button tab, cuffs with 1 button, 2 patch breast pockets with flap

S - M - L - XL - XXL

€25 1

## 2 K590

Kariban | 20.K590

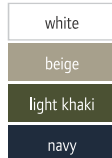
### Poplin Shirt long-sleeve "Safari"

120g/m<sup>2</sup>, 100% cotton

Roll-up sleeves with button tab, cuffs with 1 button, 2 patch breast pockets with flap

S - M - L - XL - XXL - 3XL - 4XL

€25 1



## 1 K591

Kariban | 20.K591

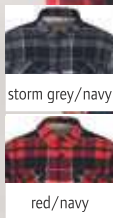


## 2 K590

Kariban | 20.K590



Sherpa Fleece



## 3 K579

Kariban | 20.K579

### Flannel Shirt with Sherpa Fleece Lining

190g/m<sup>2</sup>, 100% cotton flannel, sherpa lined body in 100% polyester, sleeve lining: 100% polyester taffeta

Classic button-placket, rounded hem, adjustable cuffs, 2 breast pockets with flap, very soft and warm fabric, neutral size label

S - M - L - XL - XXL - 3XL

€10 1



## 4 K507

Kariban | 20.K507

### Jacquard Knit Shirt long-sleeve

165g/m<sup>2</sup>, 68% cotton, 32% polyester, jacquard knit

Collar stand with synthetic leather in contrasting color, classic button-placket with faux pearl buttons, rounded hem, adjustable cuffs, soft fabric

S - M - L - XL - XXL - 3XL

€24 1



mandarin-style collar



## 5 K223

Kariban | 20.K223

### Men's Polo with Mao Collar

220g/m<sup>2</sup>, 100% combed cotton, oxford grey: 90% combed cotton, 10% viscose

Mao collar with knitted cuffs and piping in contrasting color, 3 button-placket with buttons in contrasting color, knitted cuffs on sleeves, double seams on hem, 60° washable (oxford grey: 40°)

S - M - L - XL - XXL - 3XL

€30 5





**1 Blaise Men**  
NEOBLU | 24.3182



**2 Blaise Women**  
NEOBLU | 24.3183



mercerized  
cotton

**3 Balthazar Men**  
NEOBLU | 24.3198



**4 Balthazar Women**  
NEOBLU | 24.3199



**1 Blaise Men**  
NEOBLU 24.3182

**Micro-Twill Shirt long-sleeve**

115g/m<sup>2</sup>, 100% cotton  
Half-open single-button spread collar, 7 button-placket, rounded cuffs, adjustable with 2 buttons, non-iron



optic white



deep black

S - M - L - XL - XXL - 3XL - 4XL - 5XL

👕 20 📦 1

**2 Blaise Women**  
NEOBLU 24.3183

**Micro-Twill Blouse long-sleeve**

115g/m<sup>2</sup>, 100% cotton  
Classic collar, 7 button-placket, rounded cuffs, adjustable with 2 buttons, darts on the front and back, non-iron



soft blue



night blue

S - M - L - XL - XXL - 3XL

👕 20 📦 1

**3 Balthazar Men**  
NEOBLU 24.3198

**Shirt long-sleeve**

145g/m<sup>2</sup>, 100% mercerized cotton, jersey  
Half-open single-button spread collar, rounded cuffs, adjustable with 2 buttons, 7 buttons tone-in-tone



optic white



deep black

S - M - L - XL - XXL - 3XL - 4XL

👕 10 📦 1

**4 Balthazar Women**  
NEOBLU 24.3199

**Blouse long-sleeve**

145g/m<sup>2</sup>, 100% mercerized cotton, jersey  
Half-open single-button spread collar, rounded cuffs, adjustable with 2 buttons, 7 buttons tone-in-tone



soft blue



night blue

S - M - L - XL - XXL - 3XL

👕 10 📦 1



**1 PR220**

Premier 39.0220

**Shirt "Gingham" long-sleeve**

115g/m<sup>2</sup>, 100% cotton poplin  
Tailored fit, soft collar, 2-button cuff, vichy-pattern checkered design, 40° washable

XS - S - M - L - XL - XXL - 3XL

👕 24 📦 6



black/white



red/white



light blue/white



navy/white

**2 PR320**

Premier 39.0320

**Blouse "Gingham" long-sleeve**

115g/m<sup>2</sup>, 100% cotton poplin  
Tailored fit, soft collar, 2-button cuff, small vichy-plaid-design, 40° washable

XS - S - M - L - XL - XXL - 3XL

👕 24 📦 6

**1 PR220**  
Premier | 39.0220



**2 PR320**  
Premier | 39.0320



**3 PR338**

Premier 39.0338

**Oxford Blouse "Stripes" long-sleeve**

135g/m<sup>2</sup>, 60% cotton, 40% polyester

Button under collar, necktape in contrasting color, inside cuff in contrasting color, 2-button cuff, rounded hem, darts on chest and back

XS - S - M - L - XL - XXL

👕 24 📦 6



white/grey



white/pink



white/oxford blue



white/navy



oxford blue

**4 PR238**

Premier 39.0238

**Oxford Shirt "Stripes" long-sleeve**

135g/m<sup>2</sup>, 60% cotton, 40% polyester

Classic cut, button down collar, necktape and sleeve cuffs with inside in contrasting color, 2-button cuff, rounded hem, crease resistant

S - M - L - XL - XXL - 3XL

👕 24 📦 6

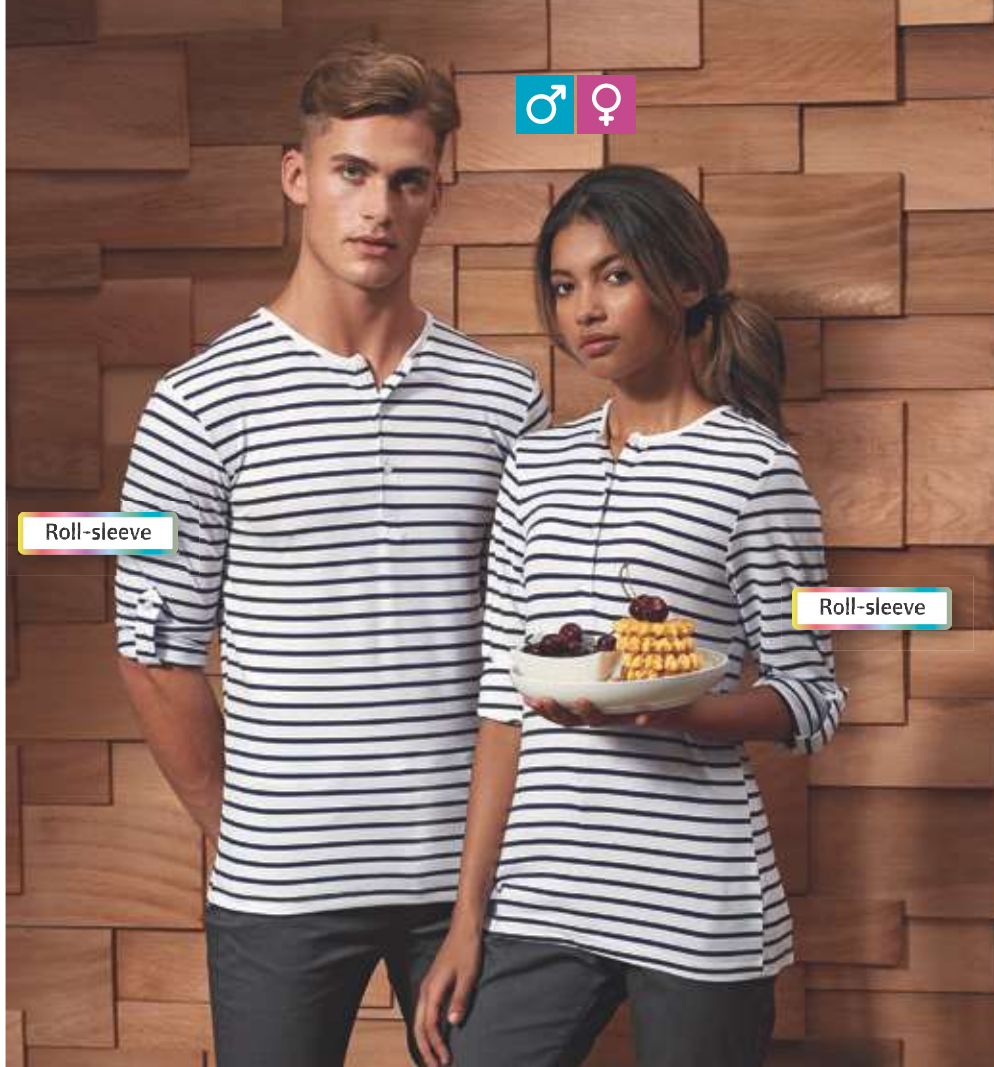


**3 PR338**  
Premier | 39.0338



**4 PR238**  
Premier | 39.0238





Roll-sleeve

Roll-sleeve

**1 PR218** Premier | 39.0218 **2 PR318** Premier | 39.0318

**1 PR218**

Premier 39.0218

**Men's Roll Sleeve T-Shirt long-sleeve**

190g/m<sup>2</sup>, 82% polyester, 14% viscose, 4% elastane, single jersey  
Round neckline with 3 buttons, roll-up sleeves with button and tab fastening to the upper arm, rib knit cuffs and hem



white



white/navy



black



grey marl



indigo

**2 PR318**

Premier 39.0318

**Ladies' Roll Sleeve T-Shirt long-sleeve**

190g/m<sup>2</sup>, 82% polyester, 14% viscose, 4% elastane, single jersey  
Round neckline with 3 buttons, roll-up sleeves with button and tab fastening to the upper arm, rib knit cuffs and hem

XS - S - M - L - XL - XXL

👕 36 📏 6



**3 PR350** Premier | 39.0350 **4 PR250** Premier | 39.0250

**3 PR350**

Premier 39.0350

**Poplin Blouse "Mulligan" long-sleeve**

115g/m<sup>2</sup>, 100% cotton  
Lightly tailored fit, narrow collar, roll-up sleeves with button and tab fastening to the upper arm, cuffs with buttons, plaid design, 40° washable



white/navy



steel/black

**4 PR250**

Premier 39.0250

**Poplin Shirt "Mulligan" long-sleeve**

115g/m<sup>2</sup>, 100% cotton  
Lightly tailored fit, narrow collar, roll-up sleeves with button and tab fastening to the upper arm, cuffs with buttons, plaid design, 40° washable



camel/navy



red/navy

S - M - L - XL - XXL - 3XL

👕 24 📏 6

**1 PR256**

Premier 39.0256  
**Poplin Shirt "Sidehill" long-sleeve**

115g/m<sup>2</sup>, 100% cotton  
 Lightly tailored fit, narrow soft collar, rolled up sleeves with tab fastening and button on the upper arm, 1-button cuff, rounded hem, 2-colored plaid design, 40° washable

S - M - L - XL - XXL - 3XL

👉 24 📦 6

**2 PR356**

Premier 39.0356  
**Poplin Blouse "Sidehill" long-sleeve**

115g/m<sup>2</sup>, 100% cotton  
 Lightly tailored fit, narrow soft collar, rolled up sleeves with tab fastening and button on the upper arm, 1-button cuff, rounded hem, 2-colored plaid design, 40° washable

XS - S - M - L - XL - XXL

👉 24 📦 6



navy/red

**3 PR354**

Premier 39.0354  
**Poplin Blouse "Ginmill" long-sleeve**

115g/m<sup>2</sup>, 100% cotton  
 Lightly tailored fit, narrow soft collar, rolled up sleeves with tab fastening and button on the upper arm, 1-button cuff, rounded hem, plaid design, 40° washable

XS - S - M - L - XL - XXL

👉 24 📦 6

**4 PR254**

Premier 39.0254  
**Poplin Shirt "Ginmill" long-sleeve**

115g/m<sup>2</sup>, 100% cotton  
 Lightly tailored fit, narrow soft collar, rolled up sleeves with tab fastening and button on the upper arm, 1-button cuff, rounded hem, plaid design, 40° washable

S - M - L - XL - XXL - 3XL

👉 24 📦 6



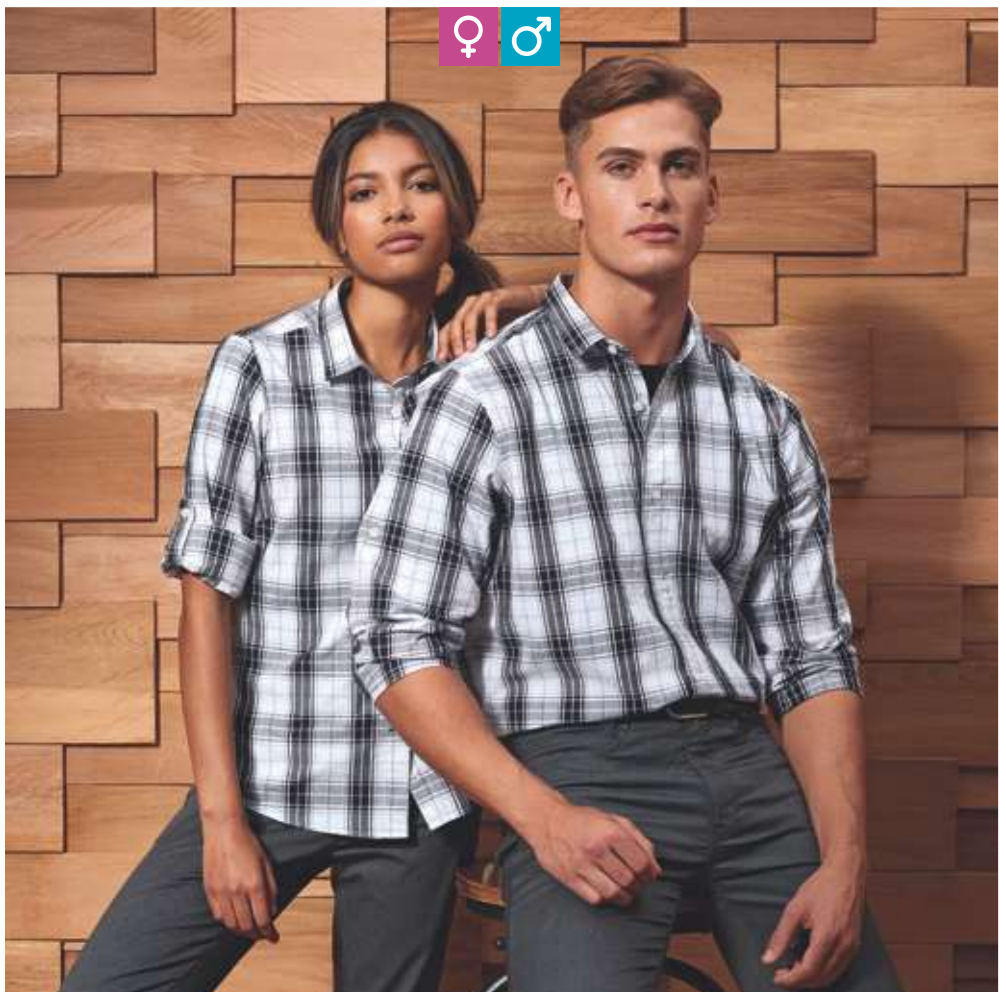
black/white



**1 PR256**  
Premier | 39.0256



**2 PR356**  
Premier | 39.0356



**3 PR354**  
Premier | 39.0354



**4 PR254**  
Premier | 39.0254





**1 PR300** Premier | 39.0300 **2 PR200** Premier | 39.0200



**3 PR202** Premier | 39.0202 **4 PR302** Premier | 39.0302



**6 PR312** Premier | 39.0312 **7 PR212** Premier | 39.0212

**5 PR715** Premier | 39.0715 **8 PR210** Premier | 39.0210

**1 PR300** Premier 39.0300

**Poplin Blouse long-sleeve**  
105g/m<sup>2</sup>, white: 115g/m<sup>2</sup>, 65% polyester, 35% cotton  
Classic cut, reinforced collar, without breast pocket, easy care, easy iron  
6/2XS - 8/XS - 10/S - 12/M - 14/L - 16/XL - 18/XXL - 20/3XL - 22/4XL - 24/5XL  
☎36 ☑6

**2 PR200** Premier 39.0200

**Poplin Shirt long-sleeve**  
105g/m<sup>2</sup>, white: 115g/m<sup>2</sup>, 65% polyester, 35% cotton  
Classic cut, reinforced collar, cuff with buttons, also suitable for cuffsinks, left chest pocket, easy care, easy iron  
37 - 38 - 39.5 - 41 - 42 - 43 - 44.5 - 46 - 48 - 52.\*  
\* only in these colors  
☎36 ☑6

**3 PR202** Premier 39.0202

**Poplin Shirt short-sleeve**  
105g/m<sup>2</sup>, white: 115g/m<sup>2</sup>, 65% polyester, 35% cotton  
Classic cut, reinforced collar, left chest pocket, easy care, easy iron  
37 - 38 - 39.5 - 41 - 42 - 43 - 44.5 - 46 - 48 - 52.\*  
\* only in these colors  
☎36 ☑6

**4 PR302** Premier 39.0302

**Poplin Blouse short-sleeve**  
105g/m<sup>2</sup>, white: 115g/m<sup>2</sup>, 65% polyester, 35% cotton  
Tailored fit, feminine collar, rounded hem, pearlescent buttons, without breast pocket, darts on the front and back, easy care, easy iron  
6/2XS - 8/XS - 10/S - 12/M - 14/L - 16/XL - 18/XXL - 20/3XL - 22/4XL - 24/5XL  
☎36 ☑6

**5 PR715** Premier 39.0715

**Epaulettes 2 Pack**  
100% polyester, woven  
Matches art 39.0212, 39.0210, 39.0312, velcro fastener, embroidery area: 9x5cm, 2 pack  
onesize  
☎100 ☑10

**6 PR312** Premier 39.0312

**Pilot Blouse short-sleeve**  
115g/m<sup>2</sup>, 65% polyester, 35% cotton  
Tailored fit, reinforced collar, cuffs with 1 button, 2 breast pockets with flap and 1 pen pocket, matching epaulettes art 39.0715, easy care, easy iron  
8/XS - 10/S - 12/M - 14/L - 16/XL - 18/XXL - 20/3XL - 22/4XL - 24/5XL  
☎36 ☑6

**7 PR212** Premier 39.0212

**Pilot Shirt short-sleeve**  
105g/m<sup>2</sup>, 65% polyester, 35% cotton  
Classic cut, reinforced collar, 2 breast pockets with flap and 1 pen pocket, matching epaulettes art 39.0715, easy care, easy iron  
37 - 38 - 39.5 - 41 - 42 - 43 - 44.5 - 46 - 48.  
☎36 ☑6

**8 PR210** Premier 39.0210

**Pilot Shirt long-sleeve**  
105g/m<sup>2</sup>, 65% polyester, 35% cotton  
Classic cut, reinforced collar, 2 breast pockets with flap and 1 pen pocket, matching epaulettes art 39.0715, easy care, easy iron  
37 - 38 - 39.5 - 41 - 42 - 43 - 44.5 - 46 - 48.  
☎36 ☑6



**1 PR244**

Premier 39.0244

**Poplin Stretch Shirt long-sleeve**

115g/m<sup>2</sup>, 97% cotton, 3% elastane  
Lightly tailored fit, cut-away collar,  
button-placket without visible  
seams, rounded hem

XS - S - M - L - XL - XXL - 3XL  
- 4XL

👕 24 📦 6



white



black



silver



pale blue

**2 PR344**

Premier 39.0344

**Poplin Stretch Blouse long-sleeve**

115g/m<sup>2</sup>, 97% cotton, 3% elastane  
Lightly tailored fit, button-placket  
without visible seams, rounded hem,  
darts on the front and back

XS - S - M - L - XL - XXL - 3XL

👕 24 📦 6

**1 PR244**

Premier | 39.0244



**2 PR344**

Premier | 39.0344



**3 PR346**

Premier 39.0346

**Poplin Stretch Blouse short-sleeve**

115g/m<sup>2</sup>, 97% cotton, 3% elastane  
Lightly tailored fit, button-placket  
without visible seams, rounded hem,  
darts on the front and back

XS - S - M - L - XL - XXL - 3XL

👕 24 📦 6



white



black



silver



pale blue

**4 PR246**

Premier 39.0246

**Poplin Stretch Shirt short-sleeve**

115g/m<sup>2</sup>, 97% cotton, 3% elastane  
Lightly tailored fit, cut-away collar,  
button-placket without visible  
seams, rounded hem

XS - S - M - L - XL - XXL - 3XL  
- 4XL

👕 24 📦 6



**3 PR346**

Premier | 39.0346



**4 PR246**

Premier | 39.0246





1 972M  
Russell | 11.972M

2 972F  
Russell | 11.972F

1 972M  
Russell 11.972M

**Coolmax® Shirt long-sleeve**

110g/m<sup>2</sup>, 70% cotton, 30% polyester Coolmax®, micro-twill

Tailored fit, breathable and moisture regulating, stiffened New Kent collar, mitred cuffs, adjustable with 2 buttons, rounded hem, left chest pocket, back yoke with 2 side pleats, easy care, suitable for tumble drying

S - M - L - XL - XXL - 3XL - 4XL

12 1

2 972F  
Russell 11.972F

**Coolmax® Blouse long-sleeve**

110g/m<sup>2</sup>, 70% cotton, 30% polyester Coolmax®, micro-twill

Tailored fit with darts on front and back, tailored fit, breathable and moisture regulating, plain collar, mitred cuffs, adjustable with 2 buttons, rounded hem, easy care, suitable for tumble drying

XS - S - M - L - XL - XXL - 3XL - 4XL

12 1



white



light blue



3 960M  
Russell | 11.960M

4 960F  
Russell | 11.960F

3 960M  
Russell 11.960M

**Ultimate Stretch Shirt long-sleeve**

130g/m<sup>2</sup>, 75% cotton, 25% elastomultiester fibre Lycra® T400

Longer cut, tailored fit, semi stiffened cut-away collar, short collar shape, narrow button-placket, square edged cuffs, wearable with cufflinks, darts on the back, durable fabric, excellent shape retention for lasting fit, moisture regulating, easy care

S - M - L - XL - XXL - 3XL - 4XL

12 1



white



black



bright sky



bright navy

4 960F  
Russell 11.960F

**Ultimate Stretch Blouse long-sleeve**

130g/m<sup>2</sup>, 75% cotton, 25% elastomultiester fibre Lycra® T400

Longer cut, tailored fit, plain collar, concealed button-placket, cocktail cuffs, darts on the back, durable fabric, excellent shape retention for lasting fit, moisture regulating, easy care

XS - S - M - L - XL - XXL - 3XL - 4XL

12 1



5 946M  
Russell | 11.946M

6 946F  
Russell | 11.946F

5 946M  
Russell 11.946M

**Stretch Shirt long-sleeve**

140g/m<sup>2</sup>, 97% cotton, 3% elastane-poplin

Tailored fit, semi flared stiffened collar with 1 button, 2-button cuff, 1 button on the cuff gauntlet, rounded hem, replacement buttons, without breast pocket, easy care, 40° washable, suitable for tumble drying

S - M - L - XL - XXL - 3XL - 4XL

12 1



white



black



port



chocolate

6 946F  
Russell 11.946F

**Stretch Blouse 3/4 Sleeve**

140g/m<sup>2</sup>, 97% cotton, 3% elastane-poplin

Tailored fit, classic collar with 1 button, sleeves with split cuff, rounded hem, replacement buttons, without breast pocket, darts on the front and back, easy care, 40° washable, suitable for tumble drying

XS - S - M - L - XL - XXL

12 1

**1 973M**

Russell 11.973M

**Coolmax® Shirt short-sleeve**

110g/m², 70% cotton, 30% polyester Coolmax®, micro-twill

Tailored fit, breathable and moisture regulating, stiffened New Kent collar, rounded hem, left chest pocket, back yoke with 2 side pleats, easy care, suitable for tumble drying

S - M - L - XL - XXL - 3XL - 4XL

👉 12 📄 1

**2 973F**

Russell 11.973F

**Coolmax® Blouse short-sleeve**

110g/m², 70% cotton, 30% polyester Coolmax®, micro-twill

Tailored fit with darts on front and back, tailored fit, breathable and moisture regulating, plain collar, rounded hem, easy care, suitable for tumble drying

XS - S - M - L - XL - XXL - 3XL - 4XL

👉 12 📄 1



white



light blue



**1 973M**  
Russell | 11.973M



**2 973F**  
Russell | 11.973F



**3 961F**

Russell 11.961F

**Ultimate Stretch Blouse short-sleeve**

130g/m², 75% cotton, 25% elastomultiester fibre Lycra® T400

Longer cut, tailored fit, plain collar, concealed button-placket, darts on the back, durable fabric, excellent shape retention for lasting fit, moisture regulating, easy care

XS - S - M - L - XL - XXL - 3XL - 4XL

👉 12 📄 1

**4 961M**

Russell 11.961M

**Ultimate Stretch Shirt short-sleeve**

130g/m², 75% cotton, 25% elastomultiester fibre Lycra® T400

Longer cut, tailored fit, semi cut-away collar, short collar shape, narrow button-placket, darts on the back, durable fabric, excellent shape retention for lasting fit, moisture regulating, easy care

S - M - L - XL - XXL - 3XL - 4XL

👉 12 📄 1



white



black



**3 961F**  
Russell | 11.961F



**4 961M**  
Russell | 11.961M



**5 947M**

Russell 11.947M

**Stretch Shirt short-sleeve**

140g/m², 97% cotton, 3% elastane-poplin

Tailored fit, elegant semi flared collar with one pearlescent button, rounded hem, replacement buttons, without breast pocket, easy care, 40° washable, suitable for tumble drying

S - M - L - XL - XXL - 3XL - 4XL

👉 12 📄 1

**6 947F**

Russell 11.947F

**Stretch Blouse short-sleeve**

140g/m², 97% cotton, 3% elastane-poplin

Tailored fit, classic collar with 1 button, capped short sleeves, rounded hem, replacement buttons, without breast pocket, darts on the front and back, easy care, 40° washable, suitable for tumble drying

XS - S - M - L - XL - XXL

👉 12 📄 1



white



black



port



chocolate



**5 947M**  
Russell | 11.947M



**6 947F**  
Russell | 11.947F





- white
- black
- bright sky

**1 956M**  
Russell | 11.956M

Classic

**Non-iron shirt long-sleeve**

120g/m<sup>2</sup>, 100% cotton-micro-twill  
Classic cut, semi flared button down collar, mitred cuffs, wearable with cufflinks, replacement buttons, left chest pocket, back yoke with box pleat, innovative fabric that keeps the shirt fresh and in shape all day, non-iron, 40° washable, suitable for tumble drying  
S - M - L - XL - XXL - 3XL - 4XL



- white
- black
- bright sky

**2 956F**  
Russell | 11.956F

Tailored

**Non-iron blouse long-sleeve**

120g/m<sup>2</sup>, 100% cotton-micro-twill  
Tailored fit, generously cut collar with long tips, flared sleeves with cuffs and button, double stud closure, replacement buttons, innovative fabric that keeps the blouse fresh and in shape all day, non-iron, 40° washable, suitable for tumble drying  
XS - S - M - L - XL - XXL - 3XL - 4XL



- white
- black
- bright sky

**3 958M**  
Russell | 11.958M

Tailored

**Non-iron shirt long-sleeve**

120g/m<sup>2</sup>, 100% cotton-micro-twill  
Tailored fit, semi flared stiffened collar, mitred cuffs, optionally portable with cufflinks, rounded hem, replacement buttons, without breast pocket, innovative fabric that keeps the shirt fresh and in shape all day, non-iron, 40° washable, suitable for tumble drying  
S - M - L - XL - XXL - 3XL - 4XL



- white
- black
- bright sky

**4 957M**  
Russell | 11.957M

Classic

**Non-iron Shirt short-sleeve**

120g/m<sup>2</sup>, 100% cotton-micro-twill  
Classic cut, semi flared button down collar, double folded down cuffs, rounded hem, replacement buttons, left chest pocket, back yoke with 2 side pleats, innovative fabric that keeps the shirt fresh and in shape all day, non-iron, 40° washable, suitable for tumble drying  
S - M - L - XL - XXL - 3XL - 4XL



- white
- black
- bright sky

**5 957F**  
Russell | 11.957F

Tailored

**Non-iron blouse short-sleeve**

120g/m<sup>2</sup>, 100% cotton-micro-twill  
Tailored fit, generously cut collar with long tips, rounded hem, double stud closure, replacement buttons, innovative fabric that keeps the blouse fresh and in shape all day, non-iron, 40° washable, suitable for tumble drying  
XS - S - M - L - XL - XXL - 3XL - 4XL



- white
- black
- bright sky

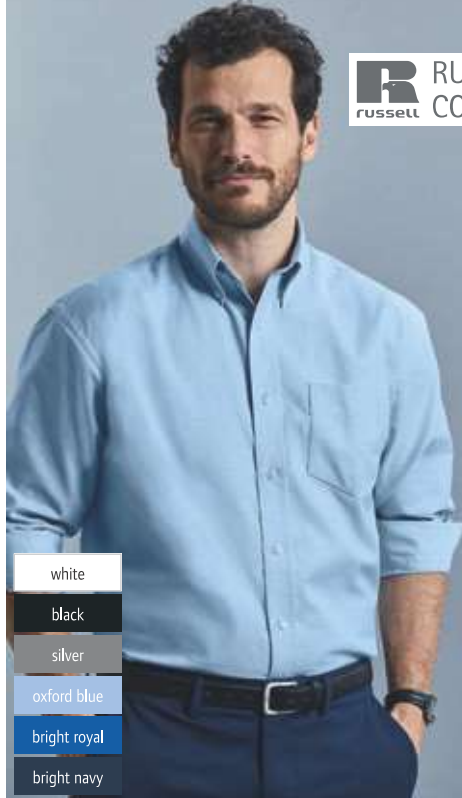
**6 959M**  
Russell | 11.959M

Tailored

**Non-iron Shirt short-sleeve**

120g/m<sup>2</sup>, 100% cotton-micro-twill  
Tailored fit, semi flared stiffened collar, double folded down cuffs, rounded hem, replacement buttons, without breast pocket, innovative fabric that keeps the shirt fresh and in shape all day, non-iron, 40° washable, suitable for tumble drying  
S - M - L - XL - XXL - 3XL - 4XL

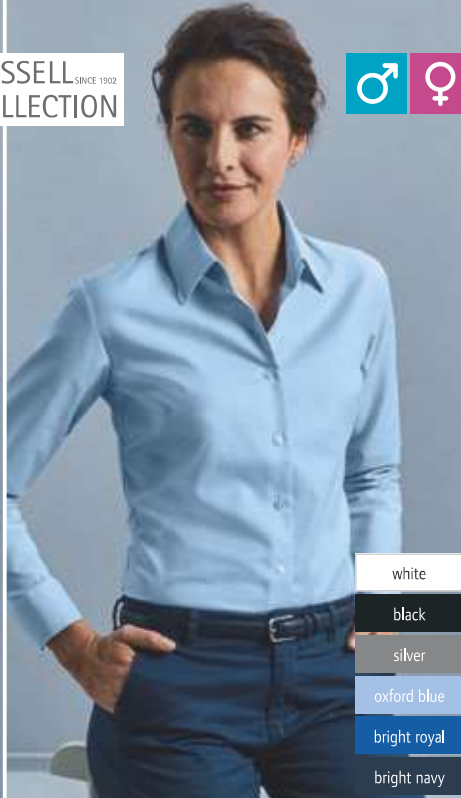
**R** RUSSELL SINCE 1902  
russell COLLECTION



- white
- black
- silver
- oxford blue
- bright royal
- bright navy

**1 932M**  
Russell | 11.932M *Classic*

**Oxford Shirt long-sleeve**  
135g/m<sup>2</sup>, 70% cotton, 30% polyester Oxford  
Classic cut, button down collar, cuffs adjustable with 2 buttons, 1 button on the cuff gauntlet, replacement buttons, V-shaped tapered pocket on the left chest, back yoke with 2 side pleats, easy care, 40° washable, suitable for tumble drying  
S - M - L - XL - XXL - 3XL - 4XL - 5XL - 6XL  
 12



- white
- black
- silver
- oxford blue
- bright royal
- bright navy

**2 932F**  
Russell | 11.932F *Tailored*

**Oxford Blouse long-sleeve**  
135g/m<sup>2</sup>, 70% cotton, 30% polyester Oxford  
Tailored fit, classic blouse collar, rounded cuffs, adjustable with 2 buttons, rounded hem, replacement buttons, darts on the chest and back for good fit, easy care, 40° washable, suitable for tumble drying  
XS - S - M - L - XL - XXL - 3XL - 4XL - 5XL - 6XL  
 12



- white
- black
- oxford blue

**3 922M**  
Russell | 11.922M *Tailored*

**Oxford Shirt long-sleeve**  
135g/m<sup>2</sup>, 70% cotton, 30% polyester Oxford  
Tailored fit, stiffened semi flared collar, rounded cuffs, adjustable with 2 buttons, optionally portable with cufflinks, rounded hem, replacement buttons, without breast pocket, easy care, 40° washable, suitable for tumble drying  
S - M - L - XL - XXL - 3XL - 4XL  
 12



- white
- black
- silver
- oxford blue
- bright royal
- bright navy

**4 933F**  
Russell | 11.933F *Tailored*

**Oxford Blouse short-sleeve**  
135g/m<sup>2</sup>, 70% cotton, 30% polyester Oxford  
Tailored fit, classic blouse collar, rounded hem, replacement buttons, darts on the chest and back for good fit, easy care, 40° washable, suitable for tumble drying  
XS - S - M - L - XL - XXL - 3XL - 4XL - 5XL - 6XL  
 12

- white
- black
- silver
- oxford blue
- bright royal
- bright navy

**5 933M**  
Russell | 11.933M *Classic*

**Oxford Shirt short-sleeve**  
135g/m<sup>2</sup>, 70% cotton, 30% polyester Oxford  
Classic cut, button down collar, rounded hem, replacement buttons, V-shaped tapered pocket on the left chest, back yoke with 2 side pleats, easy care, 40° washable, suitable for tumble drying  
S - M - L - XL - XXL - 3XL - 4XL - 5XL - 6XL  
 12



- white
- black
- oxford blue

**6 923M**  
Russell | 11.923M *Tailored*

**Oxford Shirt short-sleeve**  
135g/m<sup>2</sup>, 70% cotton, 30% polyester Oxford  
Tailored fit, stiffened semi flared collar, double folded down cuffs, rounded hem, replacement buttons, without breast pocket, easy-care, easy care, 40° washable, suitable for tumble drying  
S - M - L - XL - XXL - 3XL - 4XL  
 12



**1 964M**  
Russell | 11.964M



**2 966M**  
Russell | 11.966M

**1 964M**

Russell 11.964M

**Herringbone Contrast Shirt long-sleeve**

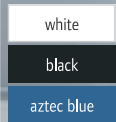
125g/m<sup>2</sup>, 84% cotton, 16% polyester  
Tailored fit, under-button-down collar, contrast edging around lower button-placket, rounded cuffs, adjustable with 2 buttons, contrasting color at cuff buttonhole and lowest buttonhole, rounded hem, darts on the back, piping in contrasting color on the inside of the collar and cuff, easy care, suitable for tumble drying  
S - M - L - XL - XXL - 3XL - 4XL  
👕 12 📏 1

**2 966M**

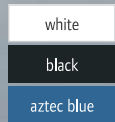
Russell 11.966M

**Contrast Shirt "Ultimate Stretch" long-sleeve**

130g/m<sup>2</sup>, 75% cotton, 25% elastomultiester (Lycra® T400®-fibre)  
Tailored fit, longer fit, under-button-down collar, narrow button-placket, rounded cuffs, adjustable with 2 buttons, contrasting color at cuff buttonhole and lowest buttonhole, rounded hem, 2-colored contrasts on the inside of the cuffs and inside the collar, moisture regulating, easy care, suitable for tumble drying  
S - M - L - XL - XXL - 3XL - 4XL  
👕 12 📏 1



**3 936M**  
Russell | 11.936M



**4 936F**  
Russell | 11.936F

**3 936M**

Russell 11.936M

**Poplin Shirt long-sleeve**

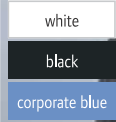
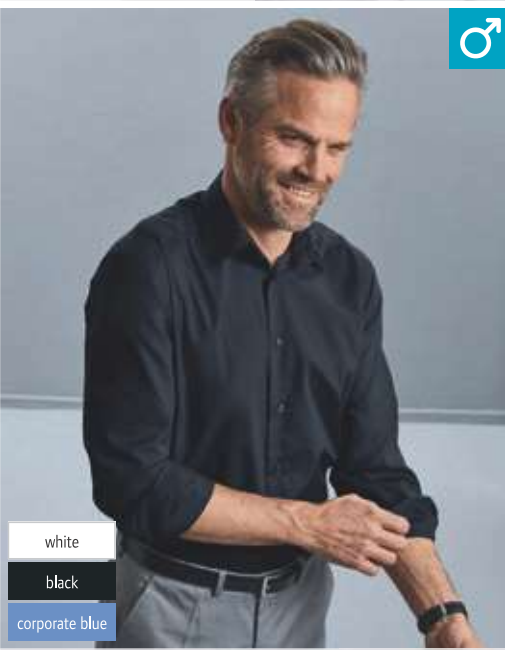
125g/m<sup>2</sup>, 100% cotton poplin  
Classic cut, stiffened classic collar, straight hem, cuffs adjustable with 2 buttons, 1 button on the cuff gauntlet, replacement buttons, left chest pocket, easy care, 40° washable, suitable for tumble drying  
S - M - L - XL - XXL - 3XL - 4XL  
👕 12 📏 1

**4 936F**

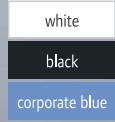
Russell 11.936F

**Poplin Blouse long-sleeve**

125g/m<sup>2</sup>, 100% cotton poplin  
Classic cut, classic collar with 1 button, rounded cuffs, adjustable with 2 buttons, rounded hem, replacement buttons, left chest pocket, easy care, 40° washable, suitable for tumble drying  
XS - S - M - L - XL - XXL - 3XL - 4XL  
👕 12 📏 1



**5 924M**  
Russell | 11.924M



**6 924F**  
Russell | 11.924F

**5 924M**

Russell 11.924M

**Poplin Shirt long-sleeve**

115g/m<sup>2</sup>, 65% polyester, 35% cotton poplin  
Tailored fit, stiffened semi flared collar, rounded cuffs, adjustable with 2 buttons, optionally portable with cufflinks, rounded hem, replacement buttons, without breast pocket, easy care, 50° washable, suitable for tumble drying  
S - M - L - XL - XXL - 3XL - 4XL  
👕 12 📏 1

**6 924F**

Russell 11.924F

**Poplin Blouse long-sleeve**

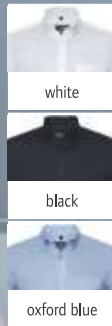
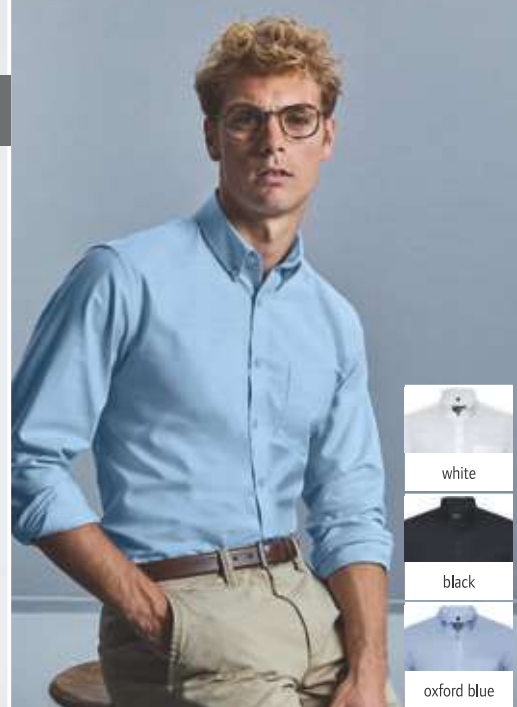
115g/m<sup>2</sup>, 65% polyester, 35% cotton poplin  
Tailored fit with darts on front and back, tailored fit, concealed button-placket, back yoke, rounded cuffs, adjustable with 2 buttons, rounded hem, replacement buttons, easy care, 50° washable, suitable for tumble drying  
XS - S - M - L - XL - XXL - 3XL - 4XL  
👕 12 📏 1

**1 920M**

Russell 11.920M

**Washed Oxford Shirt long-sleeve**

140g/m<sup>2</sup>, 100% OCS certified organic cotton  
Tailored fit, inside collar in contrasting color, button down collar, rounded cuffs, adjustable with 2 buttons on the inside in contrasting color, rounded hem, contrasting buttons, left chest pocket, detachable loop for attachment of ties or glasses, non-ironed look, garment washed, easy care, suitable for tumble drying  
S - M - L - XL - XXL - 3XL - 4XL  
👉 12 📦 1



**2 928M**

Russell 11.928M

**Oxford Shirt long-sleeve**

135g/m<sup>2</sup>, 70% cotton, 30% polyester  
Tailored fit, button down collar, rounded cuffs, adjustable with 2 buttons, rounded hem, left chest pocket, darts on the back, easy care, suitable for tumble drying  
S - M - L - XL - XXL - 3XL - 4XL  
👉 12 📦 1

**1 920M**  
Russell | 11.920M

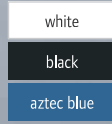
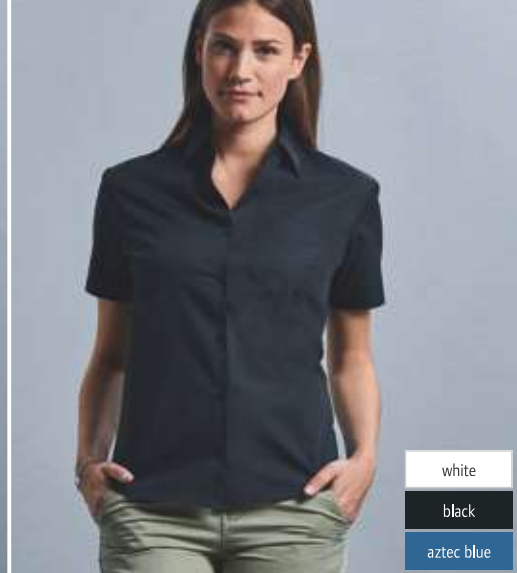
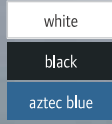
**2 928M**  
Russell | 11.928M

**3 937M**

Russell 11.937M

**Poplin Shirt short-sleeve**

125g/m<sup>2</sup>, 100% cotton poplin  
Classic cut, stiffened classic collar, straight hem, left chest pocket, easy care, 40° washable, suitable for tumble drying  
S - M - L - XL - XXL - 3XL - 4XL  
👉 12 📦 1



**4 937F**

Russell 11.937F

**Poplin Blouse short-sleeve**

125g/m<sup>2</sup>, 100% cotton poplin  
Classic cut, classic collar with 1 button, rounded hem, replacement buttons, left chest pocket, easy care, 40° washable, suitable for tumble drying  
XS - S - M - L - XL - XXL - 3XL - 4XL  
👉 12 📦 1

**3 937M**  
Russell | 11.937M

**4 937F**  
Russell | 11.937F

**5 925M**

Russell 11.925M

**Poplin Shirt short-sleeve**

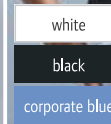
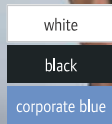
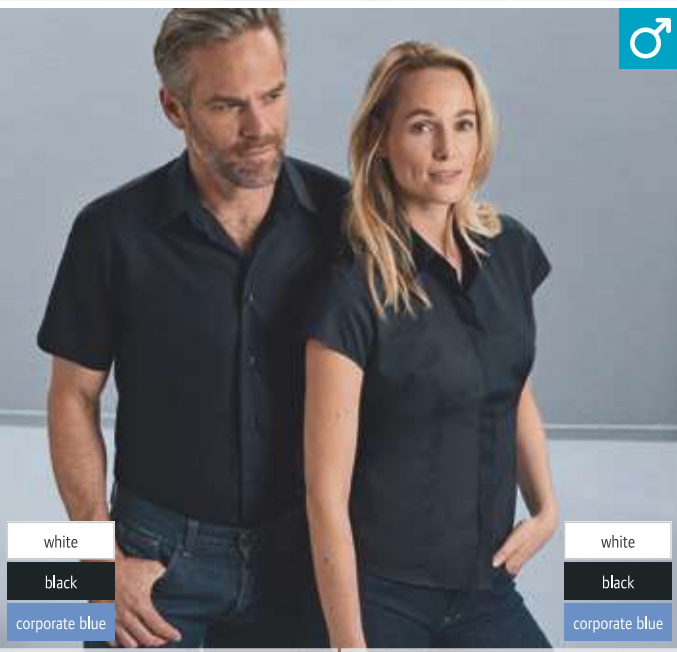
115g/m<sup>2</sup>, 65% polyester, 35% cotton poplin  
Tailored fit, stiffened semi flared collar, double folded down cuffs, rounded hem, replacement buttons, without breast pocket, easy-care, 50° washable, suitable for tumble drying  
S - M - L - XL - XXL - 3XL - 4XL  
👉 12 📦 1

**6 925F**

Russell 11.925F

**Poplin Blouse short-sleeve**

115g/m<sup>2</sup>, 65% polyester, 35% cotton poplin  
Tailored fit with darts on front and back, tailored fit, concealed button-placket, back yoke, rounded hem, replacement buttons, easy care, 50° washable, suitable for tumble drying  
XS - S - M - L - XL - XXL - 3XL - 4XL  
👉 12 📦 1



**7 926F**

Russell 11.926F

**Poplin Blouse 3/4 Sleeve**

105g/m<sup>2</sup>, 65% polyester, 35% cotton poplin  
Tailored fit with darts on front and back, tailored fit, concealed button-placket, back yoke, narrow cuffs, rounded hem, adjustable with 2 buttons, replacement buttons, easy care, 50° washable, suitable for tumble drying  
XS - S - M - L - XL - XXL - 3XL - 4XL  
👉 12 📦 1

**5 925M**  
Russell | 11.925M

**6 925F**  
Russell | 11.925F

**7 926F**  
Russell | 11.926F



**RUSSELL** SINCE 1902  
COLLECTION



**1 916M**  
Russell | 11.916M

**2 916F**  
Russell | 11.916F



**1 916M**  
Russell 11.916M

**Twill Shirt long-sleeve**

130g/m<sup>2</sup>, 100% cotton-twill  
Classic cut, button down collar, herringbone necktape tone-in-tone, rounded cuffs, adjustable with 2 buttons, rounded hem, replacement buttons, left chest pocket, fabric loop on the back yoke and V-shaped inlet on the side seam



white



black



zinc



khaki



french navy

**2 916F**  
Russell 11.916F

**Twill Blouse long-sleeve**

130g/m<sup>2</sup>, 100% cotton-twill  
Classic cut, generously cut collar, herringbone necktape tone-in-tone, rounded cuffs, adjustable with 2 buttons, rounded hem, replacement buttons, fabric loop on the back yoke

XS - S - M - L - XL - XXL  
👖 12 📦 1



**3 917M**  
Russell | 11.917M

**4 917F**  
Russell | 11.917F



**3 917M**  
Russell 11.917M

**Twill Shirt short-sleeve**

130g/m<sup>2</sup>, 100% cotton-twill  
Classic cut, button down collar, herringbone necktape tone-in-tone, rounded hem, replacement buttons, left chest pocket, fabric loop on the back yoke and V-shaped inlet on the side seam



white



black



zinc



khaki



french navy

**4 917F**  
Russell 11.917F

**Twill Blouse short-sleeve**

130g/m<sup>2</sup>, 100% cotton-twill  
Classic cut, generously cut collar, herringbone necktape tone-in-tone, rounded hem, replacement buttons, fabric loop on the back yoke and V-shaped inlet on the side seam

XS - S - M - L - XL - XXL  
👖 12 📦 1



Herringbone

Herringbone

**5 962M**  
Russell | 11.962M

**6 962F**  
Russell | 11.962F



**5 962M**  
Russell 11.962M

**Herringbone Shirt long-sleeve**

130g/m<sup>2</sup>, 84% cotton, 16% polyester  
Longer cut, tailored fit, semi cut-away collar, short collar shape, narrow button-placket, rounded cuffs, wearable with cufflinks, opaque, easy care

S - M - L - XL - XXL - 3XL - 4XL  
👖 12 📦 1



white



light blue

**6 962F**  
Russell 11.962F

**Herringbone Shirt long-sleeve**

130g/m<sup>2</sup>, 84% cotton, 16% polyester  
Longer cut, tailored fit, plain collar, narrow button-placket, narrow cuffs with longer brim, darts at chest front and back hem, opaque, easy care

XS - S - M - L - XL - XXL - 3XL - 4XL  
👖 12 📦 1



white



light blue

1 934M

Russell 11.934M

Poplin Shirt long-sleeve

115g/m², 65% polyester, 33% cotton poplin  
Classic cut, stiffened classic collar, straight hem, cuffs adjustable with 2 buttons, 1 button on the cuff gauntlet, replacement buttons, left chest pocket, easy care, 50° washable, suitable for tumble drying  
S - M - L - XL - XXL - 3XL - 4XL  
12 1



white



black



classic red



corporate blue

2 934F

Russell 11.934F

Poplin Blouse long-sleeve

115g/m², 65% polyester, 35% cotton poplin  
Classic cut, classic collar with 1 button, rounded cuffs, adjustable with 2 buttons, rounded hem, replacement buttons, left chest pocket, easy care, 50° washable, suitable for tumble drying  
XS - S - M - L - XL - XXL - 3XL - 4XL  
12 1



1 934M  
Russell | 11.934M



2 934F  
Russell | 11.934F



3 935M

Russell 11.935M

Poplin Shirt short-sleeve

115g/m², 65% polyester, 35% cotton poplin  
Classic cut, stiffened classic collar, straight hem, replacement buttons, left chest pocket, easy care, 50° washable, suitable for tumble drying  
S - M - L - XL - XXL - 3XL - 4XL  
12 1



white



black



classic red



corporate blue

4 935F

Russell 11.935F

Poplin Blouse short-sleeve

115g/m², 65% polyester, 35% cotton poplin  
Classic cut, classic collar, rounded hem, replacement buttons, left chest pocket, easy care, 50° washable, suitable for tumble drying  
XS - S - M - L - XL - XXL - 3XL - 4XL  
12 1



3 935M  
Russell | 11.935M



4 935F  
Russell | 11.935F



5 963M

Russell 11.963M

Herringbone Shirt short-sleeve

130g/m², 84% cotton, 16% polyester  
Longer cut, tailored fit, semi cut-away collar, short collar shape, narrow button-placket, opaque, easy care  
S - M - L - XL - XXL - 3XL - 4XL  
12 1



white



light blue

6 963F

Russell 11.963F

Herringbone Shirt short-sleeve

130g/m², 84% cotton, 16% polyester  
Longer cut, tailored fit, plain collar, narrow button-placket, darts at chest front and back hem, opaque, easy care  
XS - S - M - L - XL - XXL - 3XL - 4XL  
12 1



Herringbone

Herringbone

5 963M  
Russell | 11.963M

6 963F  
Russell | 11.963F

RUSSELL SINCE 1902  
COLLECTION





# seidensticker



regular

- white
- black
- anthracite
- light blue
- mid blue
- navy



slim

- white
- black
- anthracite
- light blue
- mid blue
- navy



regular

- white
- black
- anthracite
- light blue
- mid blue
- navy

**1 Blouse Regular LSL**  
Seidensticker | 78.0604



**Blouse long-sleeve**  
100% cotton, white/black/navy: poplin, anthracite/light blue/mid blue: Fil-à-Fil  
Lightly tailored fit, Kent collar, 2-button cuff, darts on the front and back, non-iron, 30° washable  
34 - 36 - 38 - 40 - 42 - 44 - 46 - 48  
👕 8 📏 1

**2 Blouse Slim LSL**  
Seidensticker | 78.0613



**Blouse long-sleeve**  
100% cotton, white/black/navy: poplin, anthracite/light blue/mid blue: Fil-à-Fil  
Tailored fit, Kent collar, cuffs adjustable with 2 buttons, darts on the front and back, non-iron, 30° washable  
32 - 34 - 36 - 38 - 40 - 42 - 44 - 46 - 48  
👕 8 📏 1

**3 Shirt Regular LSL**  
Seidensticker | 78.3000



**Shirt long-sleeve**  
100% cotton, white/black/navy: poplin, anthracite/light blue/mid blue: Fil-à-Fil  
Kent collar, cuffs adjustable with 2 buttons, breast pocket, non-iron, 30° washable, suitable for tumble drying  
38 - 39 - 40 - 41 - 42 - 43 - 44 - 45 - 46 - 47  
👕 8 📏 1



shaped

- white
- black
- anthracite
- light blue
- mid blue
- navy

**1 Shirt Shaped LSL**  
Seidensticker | 78.1000



**Shirt long-sleeve**

100% cotton, white/black/navy: poplin, anthracite/light blue/mid blue: Fil-à-Fil

Tailored fit, Kent collar, cuffs adjustable with 2 buttons, non-iron, 30° washable, suitable for tumble drying

37 - 38 - 39 - 40 - 41 - 42 - 43 - 44 - 45 - 46

👕 8 📦 1



slim

- white
- black
- anthracite
- light blue
- mid blue
- navy

**2 Shirt Slim LSL**  
Seidensticker | 78.5198



**Shirt long-sleeve**

100% cotton, white/black/navy: poplin, anthracite/light blue/mid blue: Fil-à-Fil

Slim fit, Kent collar, cuffs adjustable with 2 buttons, non-iron, 30° washable, suitable for tumble drying

36 - 37 - 38 - 39 - 40 - 41 - 42 - 43 - 44 - 45

👕 8 📦 1

seidensticker



**1 Blouse Slim Office LSL**  
Seidensticker | 78.0619

**Poplin Blouse long-sleeve**  
100% cotton  
Tailored fit, Kent collar, cuffs adjustable with 2 buttons, subtle plaid design, non-iron, 30° washable, suitable for tumble drying  
32 - 34 - 36 - 38 - 40 - 42 - 44 - 46 - 48  
👕 8 🗄 1



**2 Shirt Regular Office LSL**  
Seidensticker | 78.2810

**Poplin Shirt long-sleeve**  
100% cotton  
Kent collar, cuffs adjustable with 2 buttons, breast pocket, fine stripe pattern, non-iron, 30° washable, suitable for tumble drying  
38 - 39 - 40 - 41 - 42 - 43 - 44 - 45 - 46 - 47  
👕 8 🗄 1



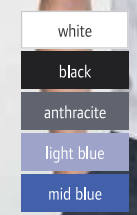
**3 Shirt Shaped Office LSL**  
Seidensticker | 78.6670

**Poplin Shirt long-sleeve**  
100% cotton  
Tailored fit, Kent collar, cuffs adjustable with 2 buttons, fine stripe pattern, non-iron, 30° washable, suitable for tumble drying  
37 - 38 - 39 - 40 - 41 - 42 - 43 - 44 - 45 - 46  
👕 8 🗄 1



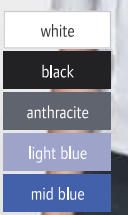
**4 Blouse Regular SSL**  
Seidensticker | 78.0605

**Blouse short-sleeve**  
100% cotton, white/black: poplin, anthracite/light blue/mid blue: Fil-à-Fil  
Lightly tailored fit, Kent collar, sewn sleeve ends with slit, darts on the front and back, non-iron, 30° washable  
34 - 36 - 38 - 40 - 42 - 44 - 46 - 48  
👕 8 🗄 1



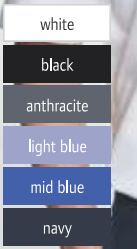
**5 Blouse Slim SSL**  
Seidensticker | 78.0614

**Blouse short-sleeve**  
100% cotton, white/black: poplin, anthracite/light blue/mid blue: Fil-à-Fil  
Tailored fit, Kent collar, cuffs with buttons, buttons in mother-of-pearl look, darts on the front and back, non-iron, 30° washable, suitable for tumble drying  
34 - 36 - 38 - 40 - 42 - 44 - 46  
👕 8 🗄 1



**6 Shirt Regular SSL**  
Seidensticker | 78.3001

**Shirt short-sleeve**  
100% cotton, white/black/navy: poplin, anthracite/light blue/mid blue: Fil-à-Fil  
Kent collar, buttons in mother-of-pearl look, breast pocket, non-iron, 30° washable, suitable for tumble drying  
38 - 39 - 40 - 41 - 42 - 43 - 44 - 45 - 46 - 47  
👕 8 🗄 1





seidensticker

SEIDENSTICKER



slim

check light blue/white

striped light blue/white

**1 Shirt Slim Office LSL**

Seidensticker | 78.0020



**Poplin Shirt long-sleeve**

100% cotton

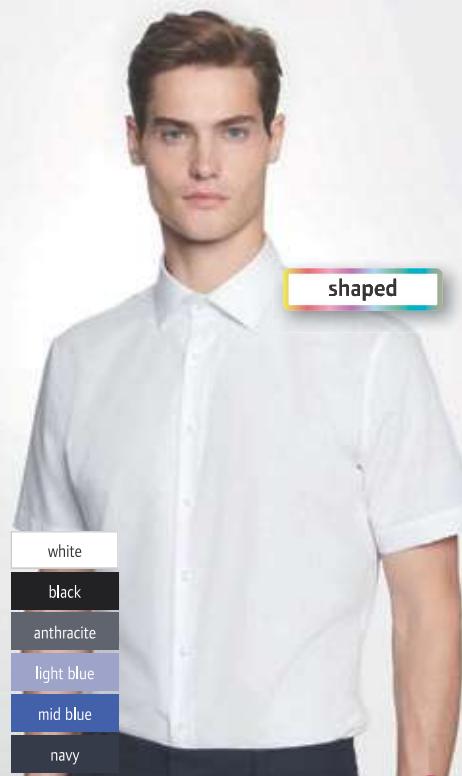
Slim fit, Kent collar, cuffs adjustable with 2 buttons, fine stripe pattern, non-iron, 30° washable, suitable for tumble drying

36 - 37 - 38 - 39 - 40 - 41 - 42 - 43 - 44 - 45

👕 8 📦 1



slim



shaped

white

black

anthracite

light blue

mid blue

navy

white

black

anthracite

light blue

mid blue

navy

**2 Shirt Shaped SSL**

Seidensticker | 78.1001



**Shirt short-sleeve**

100% cotton, white/black/navy: poplin, anthracite/light blue/mid blue: Fil-à-Fil

Tailored fit, Kent collar, non-iron, 30° washable, suitable for tumble drying

37 - 38 - 39 - 40 - 41 - 42 - 43 - 44 - 45 - 46

👕 8 📦 1

**3 Shirt Slim SSL**

Seidensticker | 78.6521



**Shirt short-sleeve**

100% cotton, white/black/navy: poplin, anthracite/light blue/mid blue: Fil-à-Fil

Slim fit, Kent collar, non-iron, 30° washable, suitable for tumble drying

36 - 37 - 38 - 39 - 40 - 41 - 42 - 43 - 44 - 45

👕 8 📦 1

Business • SHIRTS & BLOUSES

Workwear

Baby, Towels & Underwear

Accessories

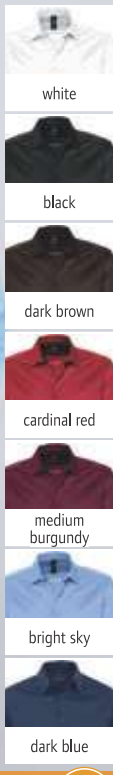
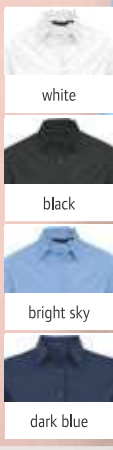


**1 Brisbane**  
SOL'S | 25.6010

**2 Elite**  
SOL'S | 25.6030

**1 Brisbane** 25.6010  
SOL'S  
**Oxford Shirt short-sleeve**  
135g/m<sup>2</sup>, 70% cotton, 30% polyester  
Button down collar, breast pocket, 2 side pleats, easy care  
S - M - L - XL - XXL - 3XL - 4XL  
👉 20 📦 1

**2 Elite** 25.6030  
SOL'S  
**Oxford Blouse short-sleeve**  
135g/m<sup>2</sup>, 70% cotton, 30% polyester  
Classic collar with 2 buttons, 7 button-placket with self-colored buttons, darts on chest, easy care  
XS - S - M - L - XL - XXL - 3XL  
👉 20 📦 1



**3 Eden**  
SOL'S | 25.7015

**4 Brighton**  
SOL'S | 25.7000

**3 Eden** 25.7015  
SOL'S  
**Stretch Blouse long-sleeve**  
140g/m<sup>2</sup>, 97% cotton, 3% elastane  
Tailored fit, collar with one button, 7 button-placket tone-in-tone, easy care  
XS - S - M - L - XL - XXL  
👉 20 📦 1

**4 Brighton** 25.7000  
SOL'S  
**Stretch Shirt long-sleeve**  
140g/m<sup>2</sup>, 97% cotton, 3% elastane  
Tailored fit, half-open single-button spread collar, 7 button-placket tone-in-tone, easy care  
S - M - L - XL - XXL - 3XL - 4XL  
👉 20 📦 1





**1 Excess**

SOL'S 25.7020

**Stretch Blouse short-sleeve**

140g/m<sup>2</sup>, 97% cotton, 3% elastane  
Tailored fit, collar with one button,  
7 button-placket tone-in-tone,  
easy-care

XS - S - M - L - XL - XXL

👁️ 20 📄 1

**2 Broadway**

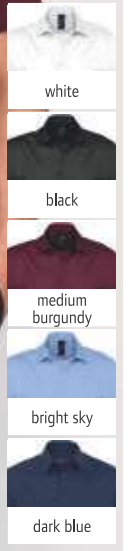
SOL'S 25.7030

**Stretch Shirt short-sleeve**

140g/m<sup>2</sup>, 97% cotton, 3% elastane  
Tailored fit, half-open single-button  
spread collar, 7 button-placket  
tone-in-tone, easy care

S - M - L - XL - XXL - 3XL - 4XL

👁️ 20 📄 1



**1 Excess**  
SOL'S | 25.7020



**2 Broadway**  
SOL'S | 25.7030



**3 Baltimore**  
SOL'S | 25.6040



**3 Baltimore**

SOL'S 25.6040

**Poplin Shirt long-sleeve**

105g/m<sup>2</sup>, 65% polyester, 35%  
cotton

Reinforced collar, button-placket  
with 7 buttons tone-in-tone, adjust-  
able cuffs with 2 buttons, left chest  
pocket, easy care

S - M - L - XL - XXL - 3XL - 4XL

👁️ 20 📄 1

**4 Executive**

SOL'S 25.6060

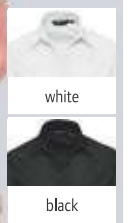
**Mix Poplin Blouse long-sleeve**

105g/m<sup>2</sup>, 65% polyester, 35%  
cotton

Classic cut, reinforced collar,  
button-placket with 7 buttons tone-  
in-tone, sleeves with 2 adjustable  
buttons and cuff, left chest pocket,  
easy care

XS - S - M - L - XL - XXL - 3XL

👁️ 20 📄 1



**4 Executive**  
SOL'S | 25.6060





**1 Bristol**  
SOL'S | 25.6050



**2 Escape**  
SOL'S | 25.6070



**1 Bristol**

SOL'S 25.6050

**Mix Poplin Shirt short-sleeve**

105g/m<sup>2</sup>, 65% polyester, 35% cotton

Reinforced collar, button-placket with 7 buttons tone-in-tone, left chest pocket, easy care

S - M - L - XL - XXL - 3XL - 4XL

☞ 20 ☐ 1



white



black

**2 Escape**

SOL'S 25.6070

**Mix Poplin Blouse short-sleeve**

105g/m<sup>2</sup>, 65% polyester, 35% cotton

Reinforced collar, button-placket with 7 buttons tone-in-tone, left chest pocket, easy care

XS - S - M - L - XL - XXL - 3XL

☞ 20 ☐ 1



**3 Boston**  
SOL'S | 25.6000



**4 Embassy**  
SOL'S | 25.6020



**3 Boston**

SOL'S 25.6000

**Oxford Shirt long-sleeve**

135g/m<sup>2</sup>, 70% cotton, 30% polyester

Button down collar, adjustable cuffs with 2 buttons and flap, left chest pocket, 2 side pleats, yarn dyed, easy care

S - M - L - XL - XXL - 3XL - 4XL

☞ 20 ☐ 1



white



black



silver



sky blue

**4 Embassy**

SOL'S 25.6020

**Oxford Blouse long-sleeve**

135g/m<sup>2</sup>, 70% cotton, 30% polyester

Classic collar with 2 buttons, 7 button-placket with self-colored buttons, rounded cuffs, adjustable with 2 buttons, darts on chest, easy care

XS - S - M - L - XL - XXL - 3XL

☞ 20 ☐ 1

**1 4000**

Tee Jays 18.4000

**Oxford Shirt Perfect long-sleeve**

166g/m<sup>2</sup>, 100% pre-launders cotton  
Tailored fit, curved collar and cuffs, button down collar, rounded hem, back yoke with box pleat, inside hanging loop  
S - M - L - XL - XXL - 3XL - 4XL

👉 10 📦 1



white



black



light blue



navy



**2 4001**

Tee Jays 18.4001

**Oxford Blouse Perfect long-sleeve**

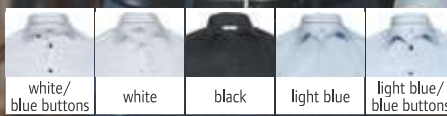
166g/m<sup>2</sup>, 100% pre-launders cotton  
Tailored fit, curved collar and cuffs, button down collar, rounded hem, back yoke with box pleat, inside hanging loop  
XS - S - M - L - XL - XXL - 3XL

👉 10 📦 1

**1 4000**  
Tee Jays | 18.4000



**2 4001**  
Tee Jays | 18.4001



**3 4020**  
Tee Jays | 18.4020



**4 4025**  
Tee Jays | 18.4025



**5 4021**  
Tee Jays | 18.4021



**Luxury Twill Shirt long-sleeve**  
133g/m<sup>2</sup>, 100% cotton-twill, yarn-dyed  
Classic cut, curved collar and cuffs, removable plastic tab inserts, moderate cut-away collar, rounded hem, darts on the back, back yoke, easy iron  
S - M - L - XL - XXL - 3XL - 4XL  
👉 10 📦 1

**Luxury Stretch Blouse long-sleeve**  
113g/m<sup>2</sup>, 96% cotton, 4% Lycra  
Tailored fit, curved collar and cuffs, rounded hem, darts on the back, back yoke with 2 side pleats, easy iron  
XS - S - M - L - XL - XXL - 3XL  
👉 10 📦 1

**Luxury Twill Slim Fit Shirt long-sleeve**  
133g/m<sup>2</sup>, 100% cotton-twill, yarn-dyed  
Tailored fit, curved collar and cuffs, removable plastic tab inserts, moderate cut-away collar, rounded hem, darts on the back, back yoke, easy iron  
S - M - L - XL - XXL  
👉 10 📦 1



**1 4002**  
Tee Jays | 18.4002



**2 4003**  
Tee Jays | 18.4003



indigo blue

**1 4002**  
Tee Jays 18.4002

**Denim Twill Shirt long-sleeve**

166g/m<sup>2</sup>, 100% cotton-twill, bleached  
Tailored fit, curved collar and cuffs, button down collar, rounded hem, back yoke with box pleat, inside hanging loop

S - M - L - XL - XXL - 3XL - 4XL

👕 10 📦 1

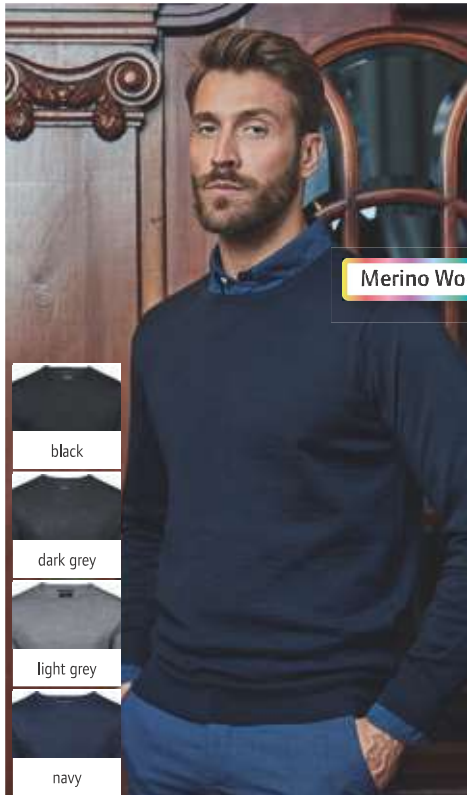
**2 4003**  
Tee Jays 18.4003

**Denim Twill Blouse long-sleeve**

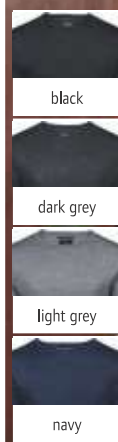
166g/m<sup>2</sup>, 100% cotton-twill, bleached  
Tailored fit, curved collar and cuffs, button down collar, rounded hem, back yoke with box pleat, inside hanging loop

XS - S - M - L - XL - XXL - 3XL

👕 10 📦 1



Merino Wool



**3 6000**  
Tee Jays | 18.6000

**Men's Pullover**

14 gauge, 50% acrylic, 50% merino wool  
Classic knitted pullover in stable Merino-mix, tailored fit, rib knit on neck, cuffs and hem, form knitted, italian blend yarn

S - M - L - XL - XXL - 3XL

👕 20 📦 1



Merino Wool



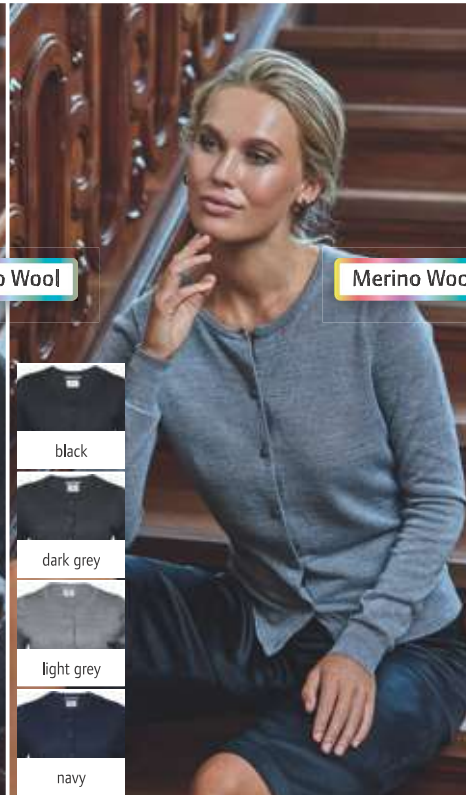
**4 6001**  
Tee Jays | 18.6001

**Men's V-Neck Pullover**

14 gauge, 50% acrylic, 50% merino wool  
Tailored fit, classic V-neck knitted pullover in stable Merino-mix, rib knit on neck, cuffs and hem, form knitted, italian blend yarn

S - M - L - XL - XXL - 3XL

👕 20 📦 1



Merino Wool



**5 6005**  
Tee Jays | 18.6005

**Ladies' Cardigan**

14 gauge, 50% acrylic, 50% merino wool  
Classic cardigan in stable Merino-mix, tailored fit, rib knit on neck, cuffs and hem, form knitted, italian blend yarn

S - M - L - XL - XXL

👕 20 📦 1



**1 717M**

Russell 11.717M

**Men's Knitted Pullover**

275g/m<sup>2</sup>, 50% cotton, 50% polyacrylic CottonBlend™

Round neckline, cuffs and hem with elastane, knitted in shape, easy-care, quick drying, 40° washable

XXS - XS - S - M - L - XL - XXL - 3XL - 4XL

👕 12 📦 1

**2 717F**

Russell 11.717F

**Ladies' Knitted Pullover**

275g/m<sup>2</sup>, 50% cotton, 50% polyacrylic CottonBlend™

Round neckline, cuffs and hem with elastane, knitted in shape, easy-care, quick drying, 40° washable

XXS - XS - S - M - L - XL - XXL

👕 12 📦 1

**3 710F**

Russell 11.710F

**Ladies' V-Neck Knitted Pullover**

275g/m<sup>2</sup>, 50% cotton, 50% polyacrylic CottonBlend™

Cuffs and hem with elastane for high shape retention, easy-care, quick drying, 40° washable

XXS - XS - S - M - L - XL - XXL - 3XL - 4XL

👕 12 📦 1

**4 710M**

Russell 11.710M

**V-Neck Knitted Pullover**

275g/m<sup>2</sup>, 50% cotton, 50% polyacrylic CottonBlend™

Binding at cuffs and on waistband for excellent stretchability and shape retention, ribbed trim with elastane, easy-care, 40° washable

XXS - XS - S - M - L - XL - XXL - 3XL - 4XL

👕 12 📦 1

**5 716M**

Russell 11.716M

**V-Neck sleeveless Pullover**

275g/m<sup>2</sup>, 50% cotton, 50% polyacrylic CottonBlend™

Hem and cuffs with elastane for high shape retention, easy-care, quick drying, 40° washable

XXS - XS - S - M - L - XL - XXL - 3XL - 4XL

👕 12 📦 1

**6 715M**

Russell 11.715M

**Men's V-Neck Knitted Jacket**

275g/m<sup>2</sup>, 50% cotton, 50% polyacrylic CottonBlend™

Full-length button-placket with inside facing, cuffs and hem with elastane, buttons tone-in-tone, knitted in shape, easy-care, quick drying, 40° washable

XXS - XS - S - M - L - XL - XXL - 3XL - 4XL

👕 12 📦 1

**7 715F**

Russell 11.715F

**Ladies' V-Neck Knitted Jacket**

275g/m<sup>2</sup>, 50% cotton, 50% polyacrylic CottonBlend™

Cuffs and hem with elastane for high shape retention, buttons tone-in-tone, replacement buttons, easy-care, quick drying, 40° washable

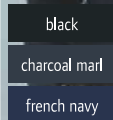
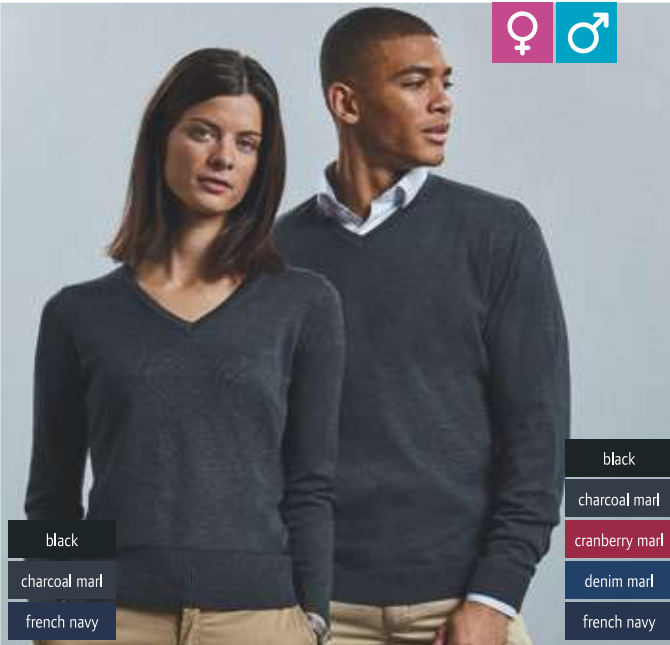
XXS - XS - S - M - L - XL - XXL - 3XL - 4XL

👕 12 📦 1



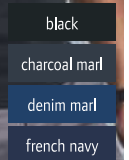
**1 717M**  
Russell | 11.717M

**2 717F**  
Russell | 11.717F



**3 710F**  
Russell | 11.710F

**4 710M**  
Russell | 11.710M



**5 716M**  
Russell | 11.716M



**6 715M**  
Russell | 11.715M

**7 715F**  
Russell | 11.715F



**1 JN 657**  
James & Nicholson | 02.0657



**2 JN 656**  
James & Nicholson | 02.0656



black



anthracite melange



grey heather



forest green

**1 JN 657**  
James & Nicholson 02.0657  
**Men's V-Neck Pullover sleeveless**  
260g/m<sup>2</sup>, 100% cotton  
V-neck, light knit quality, machine washable  
S - M - L - XL - XXL - 3XL  
👉 30 📦 1

**2 JN 656**  
James & Nicholson 02.0656  
**Ladies' V-Neck Pullover sleeveless**  
260g/m<sup>2</sup>, 100% cotton  
Lightly tailored fit, V-neck, light knit quality, machine washable  
XS - S - M - L - XL - XXL  
👉 30 📦 1



**3 JN 659**  
James & Nicholson | 02.0659



**4 JN 658**  
James & Nicholson | 02.0658



green



camel



dark orange



red

**3 JN 659**  
James & Nicholson 02.0659  
**Men's V-Neck Pullover**  
260g/m<sup>2</sup>, 100% cotton  
V-neck, light knit quality, machine washable  
S - M - L - XL - XXL - 3XL  
👉 30 📦 1

**4 JN 658**  
James & Nicholson 02.0658  
**Ladies' V-Neck Pullover**  
260g/m<sup>2</sup>, 100% cotton  
Tailored fit, V-neck, light knit quality, machine washable  
XS - S - M - L - XL - XXL  
👉 30 📦 1



**5 JN 661**  
James & Nicholson | 02.0661

**6 JN 660**  
James & Nicholson | 02.0660



bordeaux



glacier blue



royal



navy

**5 JN 661**  
James & Nicholson 02.0661  
**Men's V-Neck Cardigan**  
260g/m<sup>2</sup>, 100% cotton  
V-neck, light knit quality, machine washable  
S - M - L - XL - XXL - 3XL  
👉 30 📦 1

**6 JN 660**  
James & Nicholson 02.0660  
**Ladies' V-Neck Cardigan**  
260g/m<sup>2</sup>, 100% cotton  
Tailored fit, V-neck, light knit quality, machine washable  
XS - S - M - L - XL - XXL  
👉 30 📦 1



Silk and Cashmere for particularly soft Touch

**1 JN 664**

James & Nicholson | 02.0664

**Men's Pullover**

190g/m<sup>2</sup>, 70% cotton, 25% silk, 5% cashmere

Classic cut, V-neck, fine light knit, machine washable

S - M - L - XL - XXL - 3XL

👉 30 📦 1



**1 JN 664**  
James & Nicholson | 02.0664

Silk and Cashmere for particularly soft Touch



**2 JN 663**  
James & Nicholson | 02.0663



Silk and Cashmere for particularly soft Touch



**3 JN 668**  
James & Nicholson | 02.0668

**Men's Cardigan**

190g/m<sup>2</sup>, 70% cotton, 25% silk, 5% cashmere

Classic cut, V-neck, fine light knit, machine washable

S - M - L - XL - XXL - 3XL

👉 30 📦 1

Silk and Cashmere for particularly soft Touch



**4 JN 667**  
James & Nicholson | 02.0667

**Ladies' Cardigan**

190g/m<sup>2</sup>, 70% cotton, 25% silk, 5% cashmere

Classic tailored cut, V-neck, fine light knit, machine washable

XS - S - M - L - XL - XXL

👉 30 📦 1



**5 PR698**  
Premier | 39.0698

**Ladies' Knitted Cardigan long**

55% cotton, 45% acrylic

Ribbed edging on neck, cuffs and hem, 7 buttons, 2 patch pockets

8/XS - 10/S - 12/M - 14/L - 16/XL - 18/XXL - 20/3XL - 22/4XL - 24/5XL

👉 12 📦 3



KARIBAN



1 K6130  
Kariban | 20.6130



2 K6131  
Kariban | 20.6131

3 K730  
Kariban | 20.K730



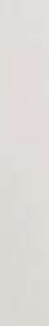
4 K731  
Kariban | 20.K731



5 K501  
Kariban | 20.K501



6 K502  
Kariban | 20.K502



black



anthracite heather



navy

1 K6130  
Kariban 20.6130

**Men's Suit Jacket**  
200g/m<sup>2</sup>, 100% polyester Taffeta®lining, 64% polyester, 34% viscose, 2% elastane  
Jacket with 2 buttons, 4-button cuff, 2 inside pockets with button, 2 side pockets with pipings and flap, 1 mobile phone pocket, 1 chest pocket, 2 slits on the back, decoration access on the left side, dry cleaning  
46 - 48 - 50 - 52 - 54 - 56 - 58 - 60 - 62 - 64  
☎ 5 ☐ 1

2 K6131  
Kariban 20.6131

**Ladies' Suit Jacket**  
200g/m<sup>2</sup>, 100% polyester Taffeta®lining, 64% polyester, 34% viscose, 2% elastane  
3-button cuff, 2 front pockets with piping, 2 inside pockets with button, 1 slit on the back, french sizes: please have a look at our size table, dry cleaning  
36 - 38 - 40 - 42 - 44 - 46  
☎ 5 ☐ 1

3 K730  
Kariban 20.K730

**Men's Suit Trousers**  
220g/m<sup>2</sup>, 64% polyester, 34% viscose, 2% elastane  
Waistband with belt loops, slim leg, unhemmed trouser legs so that they can be tailored to fit, zip with concealed hook and button, 2 italian front pockets and 2 back pockets with piping, semi lined front, french sizes: please have a look at our size table, dry cleaning  
36 - 38 - 40 - 42 - 44 - 46 - 48 - 50 - 52 - 54  
☎ 20 ☐ 1



black



anthracite heather



navy

4 K731  
Kariban 20.K731

**Ladies' Suit Trousers**  
220g/m<sup>2</sup>, 64% polyester, 34% viscose, 2% elastane  
Slim fit, elastic hem on the backside for optimal comfort, trouser legs with invisible hems, zip with concealed hook and button, 2 italian front pockets and 2 back pockets with piping, dry cleaning, inside leg: 30 Inches (78cm)  
XS - S - M - L - XL - XXL  
☎ 20 ☐ 1

5 K501  
Kariban 20.K501

**Men's Vest**  
220g/m<sup>2</sup>, 64% polyester, 34% viscose, 2% elastane, lining: 100% polyester Taffeta®  
Tailored fit, closure with 5 buttons, 2 small welt pockets, side slits, lined back, adjustable strap on the back with metal buckle  
46 - 48 - 50 - 52 - 54 - 56 - 58 - 60 - 62 - 64  
☎ 20 ☐ 1

6 K502  
Kariban 20.K502

**Ladies' Vest**  
220g/m<sup>2</sup>, 64% polyester, 34% viscose, 2% elastane, lining: 100% polyester Taffeta®  
Tailored fit, closure with 4 buttons, 2 small welt pockets, side slits, lined back, adjustable strap on the back with metal buckle  
34 - 36 - 38 - 40 - 42 - 44 - 46  
☎ 20 ☐ 1



black

# KARIBAN

## 1 K6133

Kariban 20.6133

### Ladies' Blazer

250g/m<sup>2</sup>, night navy heather: 80% polyester, 17% cotton, 3% elastane, light grey heather: 72% polyester, 25% viscose, 3% elastane, lining: 100% polycotton, sleeve lining: 100% polyester Taffeta®

Cuffs with 3 buttons including one with a contrasting buttonhole, 2 front pockets with piping, 1 inner pocket with button, 1 slit on the back, contrasting inner side, dry cleaning, with 1 button

34 - 36 - 38 - 40 - 42 - 44 - 46

👉 10 📄 1

## 2 K6132

Kariban 20.6132

### Men's Blazer

250g/m<sup>2</sup>, night navy heather: 80% polyester, 18% cotton, 2% elastane, light grey heather: 74% polyester, 24% viscose, 2% elastane, lining: 100% polycotton, sleeve lining: 100% polyester Taffeta®

Cuffs with 4 buttons including one with a contrasting buttonhole, with 2 buttons, 2 inside pockets with button, 2 side pockets with pipings and flap, 1 mobile phone pocket, 1 chest pocket, 2 slits on the back, contrasting inner side, decoration access on the left side, dry cleaning

46 - 48 - 50 - 52 - 54 - 56 - 58 - 60 - 62 - 64

👉 10 📄 1



light grey heather



night navy heather

1 K6133  
Kariban | 20.6133



light grey heather



night navy heather

2 K6132  
Kariban | 20.6132

## 3 K6141

Kariban 20.6141

### Ladies' Coat "Premium"

100% polyester Taffeta®lining, 79% polyester, 18% viscose, 3% elastane High stand-up collar, 2x4-buttons closure, 2 side pockets with flap, 1 inner pocket with piping

34 - 36 - 38 - 40 - 42 - 44 - 46

👉 5 📄 1

## 4 K6140

Kariban 20.6140

### Men's Coat "Premium"

100% polyester Taffeta®lining, 79% polyester, 18% viscose, 3% elastane Cuffs with 4 buttons, 6 button fastening, 2 side pockets with piping and flap, 1 inner pocket with press stud, 2 open breast pockets with press stud, 1 inner pocket with zip, slit on the back

46 - 48 - 50 - 52 - 54 - 56 - 58 - 60 - 62 - 64

👉 5 📄 1



black

3 K6141  
Kariban | 20.6141



black

4 K6140  
Kariban | 20.6140



**1 Marius Men**  
NEOBLU | 24.3164



NEOBLU  
PEOPLE IN MOTION

**2 Marius Women**  
NEOBLU | 24.3165



**1 Marius Men**  
NEOBLU 24.3164  
**Men's Suit Jacket**  
204g/m<sup>2</sup>, 66% polyester, 34% viscose, twill, lining: 100% polyester Taffeta®  
Reverse collar, 2 buttons, 2 side pockets with pipings and flap, breast pocket with piping, 1 slit on the back, decoration access  
46 – 48 – 50 – 52 – 54 – 56 – 58 – 60 – 62 – 64  
👉 10 📄 1



deep black



anthracite melange



night blue

**2 Marius Women**  
NEOBLU 24.3165  
**Ladies' Suit Jacket**  
204g/m<sup>2</sup>, 66% polyester, 34% viscose, twill, lining: 100% polyester Taffeta®  
Reverse collar, 2 side pockets with pipings and flap, breast pocket with piping, 1 slit on the back, decoration access, with 1 button  
34 – 36 – 38 – 40 – 42 – 44 – 46  
👉 10 📄 1



**3 Marcel Men**  
NEOBLU | 24.3169



**3 Marcel Women**  
NEOBLU | 24.3170



**3 Marcel Men**  
NEOBLU 24.3169  
**Men's Blazer**  
210g/m<sup>2</sup>, 67% polyester, 33% cotton, piqué, lining: 100% polyester Taffeta®  
Reverse collar, 2 buttons, breast pocket with piping, 2 flap pockets, 1 slit on the back, half lining, dry cleaning  
46 – 50 – 52 – 54 – 56 – 58 – 60  
👉 10 📄 1



grey melange



night blue

**4 Marcel Women**  
NEOBLU 24.3170  
**Ladies' Blazer**  
210g/m<sup>2</sup>, 67% polyester, 33% cotton, piqué, lining: 100% polyester Taffeta®  
Reverse collar, 2 buttons, breast pocket with piping, 2 flap pockets, 1 slit on the back, half lining, dry cleaning  
36 – 38 – 40 – 42 – 44 – 46  
👉 10 📄 1



**5 Max Men**  
NEOBLU | 24.3166



**5 Max Women**  
NEOBLU | 24.3167



**5 Max Men**  
NEOBLU 24.3166  
**Men's Vest**  
204g/m<sup>2</sup>, 66% polyester, 34% viscose, twill, lining fabric and back area: 100% polyester Taffeta®  
5 buttons, 2 front pockets with piping, adjustable strap on the back with metal buckle, dry cleaning  
46 – 50 – 52 – 54 – 56 – 58 – 60  
👉 10 📄 1



deep black



anthracite melange



night blue

**6 Max Women**  
NEOBLU 24.3167  
**Ladies' Vest**  
204g/m<sup>2</sup>, 66% polyester, 34% viscose, twill, lining fabric and back area: 100% polyester Taffeta®  
5 buttons, 2 front pockets with piping, adjustable strap on the back with metal buckle, dry cleaning  
34 – 36 – 38 – 40 – 42 – 44 – 46  
👉 10 📄 1

## 1 Antoine Men

NEOBLU 24.3174

### Men's Jacket

100% polyester, PU coating, lining:  
100% polyester Taffeta®

Waterproof (5,000mm water column), waterproof zips, hood with drawcord, 2 side pockets with zip, thermally welded seams, rear part with fish tail, dry cleaning

S - M - L - XL - XXL - 3XL - 4XL

👉 10 📦 1



deep black



deep khaki



night blue

## 2 Antoine Women

NEOBLU 24.3175

### Ladies' Jacket

100% polyester, PU coating, lining:  
100% polyester Taffeta®

Waterproof (5,000mm water column), waterproof zips, hood with drawcord, 2 side pockets with zip, thermally welded seams, rear part with fish tail, dry cleaning

S - M - L - XL - XXL - 3XL

👉 10 📦 1



1 Antoine Men  
NEOBLU | 24.3174



2 Antoine Women  
NEOBLU | 24.3175



## 3 Alfred Men

NEOBLU 24.3176

### Men's Travel Coat

100% polyester, PU coating, lining:  
100% 210T polyester

Stand-up collar, button placket with 1 visible button and 4 hidden buttons, 2 buttonable adjustment tabs on the sleeves, zip with double slider and buttons, 2 buttonable front pockets, 1 slit on the back, buttoned storm flap on the back, dry cleaning

S - M - L - XL - XXL - 3XL - 4XL

👉 10 📦 1

## 4 Alfred Women

NEOBLU 24.3177

### Ladies' Travel Coat

100% polyester, PU coating, lining:  
100% 210T polyester

Button placket with 1 visible button and 4 hidden buttons, 2 buttonable adjustment tabs on the sleeves, zip with double slider and buttons, 2 buttonable front pockets, dry cleaning

S - M - L - XL - XXL - 3XL

👉 10 📦 1



light brown



night blue



3 Alfred Men  
NEOBLU | 24.3176



4 Alfred Women  
NEOBLU | 24.3177



KARIBAN



**1 K500**  
Kariban | 20.K500



**2 K732**  
Kariban | 20.K732

**1 K500**  
Kariban 20.K500  
**Dress short-sleeve**  
220g/m<sup>2</sup>, 64% polyester, 34% viscose, 2% elastane  
Classic tailored cut, slit and concealed zip at the back, stretch lining for extra comfort, french sizes, please have a look at our size table, dry cleaning  
36 - 38 - 40 - 42 - 44 - 46  
👚 20 🗂 1

**2 K732**  
Kariban 20.K732  
**Pencil Skirt**  
220g/m<sup>2</sup>, 64% polyester, 34% viscose, 2% elastane  
Slit and concealed zip at the back, stretch lining for extra comfort, french sizes, dry cleaning, please have a look at our size table  
36 - 38 - 40 - 42 - 44 - 46  
👚 20 🗂 1



**3 Constance**  
NEOBLU | 24.3168








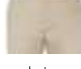
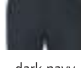
**4 Camille**  
NEOBLU | 24.3171

**3 Constance**  
NEOBLU 24.3168  
**Pencil Skirt**  
204g/m<sup>2</sup>, 66% polyester, 34% viscose, twill, lining: 100% polyester Taffeta®  
Elastic hem with belt loops, slit and concealed zip at the back, knee length, dry cleaning  
34 - 36 - 38 - 40 - 42 - 44 - 46  
👚 10 🗂 1

**4 Camille**  
NEOBLU 24.3171  
**Dress short-sleeve**  
280g/m<sup>2</sup>, 74% polyester, 23% viscose, 3% elastane  
Concealed zip at the back, knee length, dry cleaning  
36 - 38 - 40 - 42 - 44 - 46  
👚 20 🗂 1

NEOBLU  
PEOPLE IN MOTION



-  white
-  black
-  fine grey
-  camel
-  light khaki
-  beige
-  dark navy

**1 K740**  
 Kariban 20.K740  
**Men's Chino Pants**  
 244g/m<sup>2</sup>, 98% cotton-twill, 2% elastane, enzyme washed  
 Belt loops, zip and button, 2 italian side pockets with 1 coin pocket and 1 ticket pocket, 2 back pockets with piping and reinforced seams, specially treated to appear intentionally aged - colors may vary, french sizes, please have a look at our size table  
 38 - 40 - 42 - 44 - 46 - 48 - 50 - 52 - 54  
 ☞ 20 ☐ 1




**2 K741**  
 Kariban 20.K741  
**Ladies' Chino Pants**  
 244g/m<sup>2</sup>, 98% cotton-twill, 2% elastane, enzyme washed  
 Belt loops, zip and button, 2 italian side pockets, 2 back pockets with piping and reinforced seams, 1 ticket pocket, specially treated to appear intentionally aged - colors may vary, french sizes, please have a look at our size table  
 34 - 36 - 38 - 40 - 42 - 44 - 46 - 48  
 ☞ 20 ☐ 1

**1 K740**  
 Kariban | 20.K740

**2 K741**  
 Kariban | 20.K741



-  light charcoal
-  light khaki
-  beige

-  light charcoal
-  light khaki
-  beige

**3 K742**  
 Kariban | 20.K742  
**Jeans**  
 390g/m<sup>2</sup>, 99% cotton denim, 1% elastane  
 Belt loops, zip with 1 metal button, 2 back patch pockets, 2 front pockets and 1 ticket pocket, contrasting seams, french sizes, please have a look at our size table  
 38 - 40 - 42 - 44 - 46 - 48 - 50 - 52 - 54  
 ☞ 20 ☐ 1

**4 K745**  
 Kariban | 20.K745  
**Men's Pants**  
 140g/m<sup>2</sup>, 100% cotton poplin  
 Drawstring on hem, zip and press stud, 2 italian side pockets with 1 coin pocket, 2 patch side pockets and 2 back pockets with press stud, french sizes, please have a look at our size table  
 38 - 40 - 42 - 44 - 46 - 48 - 50 - 52 - 54  
 ☞ 20 ☐ 1

**5 K746**  
 Kariban | 20.K746  
**Ladies' Pants**  
 140g/m<sup>2</sup>, 100% cotton poplin  
 Drawstring on hem, zip and press stud, 2 italian side pockets with 1 coin pocket, 2 patch side pockets and 2 back pockets with press stud, french sizes, please have a look at our size table  
 34 - 36 - 38 - 40 - 42 - 44 - 46  
 ☞ 20 ☐ 1



♂ ♀

**1 Gustave Men**  
NEOBLU | 24.3178

↔ TWILL NEW



**2 Gustave Women**  
NEOBLU | 24.3179

↔ TWILL NEW



deep black



deep khaki



night blue

**1 Gustave Men**  
NEOBLU 24.3178

**Men's Chino Pants**  
335g/m<sup>2</sup>, 98% cotton, 2% elastane, twill  
Elastic hem with belt loops, zip and button, 2 back pockets with piping, front italian pockets, dry cleaning  
38 - 40 - 42 - 44 - 46 - 48 - 50 - 52 - 54 - 56  
👉20 📏1

**2 Gustave Women**  
NEOBLU 24.3179

**Ladies' Chino Pants**  
335g/m<sup>2</sup>, 98% cotton, 2% elastane, twill  
Elastic hem with belt loops, zip and button, 2 back pockets with piping, front italian pockets, dry cleaning  
36 - 38 - 40 - 42 - 44 - 46 - 48  
👉20 📏1



♂ ♀

**3 Gabin Men**  
NEOBLU | 24.3162

↔ TWILL NEW



**4 Gabin Women**  
NEOBLU | 24.3163

↔ TWILL NEW



deep black



anthracite melange



night blue

**3 Gabin Men**  
NEOBLU 24.3162

**Men's Suit Trousers**  
204g/m<sup>2</sup>, 66% polyester, 34% viscose, twill  
Elastic hem with belt loops, 2 buttocks darts, zip and button, 2 back pockets with piping, front italian pockets, dry cleaning  
38 - 40 - 42 - 44 - 46 - 48 - 50 - 52 - 54 - 58  
👉10 📏1

**4 Gabin Women**  
NEOBLU 24.3163

**Ladies' Suit Trousers**  
204g/m<sup>2</sup>, 66% polyester, 34% viscose, twill  
Elastic hem with belt loops, 2 buttocks darts, zip and button, 2 back pockets with piping, front italian pockets, dry cleaning  
34 - 36 - 38 - 40 - 42 - 44 - 46  
👉10 📏1



♂ ♀

**5 Gaspard Men**  
NEOBLU | 24.3180

↔ TWILL NEW



**6 Gaspard Women**  
NEOBLU | 24.3181

↔ TWILL NEW



deep black



brut denim

**5 Gaspard Men**  
NEOBLU 24.3180

**Men's Jeans**  
339g/m<sup>2</sup>, 98% cotton, 2% elastane, denim  
Straight cut, belt loops, zip and button, 2 front pockets and 1 ticket pocket, 2 back pockets, matt metal buttons and rivets  
38 - 40 - 42 - 44 - 46 - 48 - 50 - 52 - 54  
👉20 📏1

**6 Gaspard Women**  
NEOBLU 24.3181

**Ladies' Jeans**  
339g/m<sup>2</sup>, 98% cotton, 2% elastane, denim  
Slim fit, belt loops, zip and button, 2 front pockets and 1 ticket pocket, 2 back pockets, matt metal buttons and rivets  
34 - 36 - 38 - 40 - 42 - 44 - 46  
👉20 📏1

# KARIBAN

## 1 K755

Kariban 20.K755

### Men's Bermuda Shorts

140g/m<sup>2</sup>, 100% cotton poplin  
 Drawstring on hem, zip and press stud, 2 italian side pockets with 1 coin pocket, 2 patch side pockets and 2 back pockets with press stud, french sizes, please have a look at our size table  
 38 - 40 - 42 - 44 - 46 - 48 - 50 - 52 - 54  
 ☎25 ☐1



light charcoal



light khaki



beige



1 K755  
 Kariban | 20.K755

2 K756  
 Kariban | 20.K756

## 2 K756

Kariban 20.K756

### Ladies' Bermuda Shorts

140g/m<sup>2</sup>, 100% cotton poplin  
 Drawstring on hem, zip and press stud, 2 italian side pockets with 1 coin pocket, 2 patch side pockets and 2 back pockets with press stud, french sizes, please have a look at our size table  
 34 - 36 - 38 - 40 - 42 - 44 - 46  
 ☎25 ☐1



## 3 Jared Women

SOL'S 25.2918

### Ladies' Satin Stretch Pants

228g/m<sup>2</sup>, 98% cotton, 2% elastane  
 Close fit, belt loops, 2 back pockets with piping, front italian pockets, ticket pocket, TearAway label, french sizes: please have a look at our size table  
 36 - 38 - 40 - 42 - 44 - 46  
 ☎20 ☐1



black



creamy dark blue



french navy



3 Jared Women  
 SOL'S | 25.2918

4 Jared Men  
 SOL'S | 25.2917

## 4 Jared Men

SOL'S 25.2917

### Men's Satin Stretch Pants

228g/m<sup>2</sup>, 98% cotton, 2% elastane  
 Close fit, belt loops, 2 back pockets with piping, front italian pockets, ticket pocket, TearAway label, french sizes: please have a look at our size table  
 38 - 40 - 42 - 44 - 46 - 48 - 50 - 52  
 ☎20 ☐1

## 5 Jules Women

SOL'S 25.0142

### Ladies' Pants 7/8

240g/m<sup>2</sup>, 98% cotton, 2% elastane  
 Slim fit, fixed waistband with belt loops, zip, rear pocket with cover, comfortable due to elastane, french sizes: please have a look at our size table, 7/8 length  
 34 - 36 - 38 - 40 - 42 - 44 - 46  
 ☎20 ☐1



white



black



chestnut



sunset pink



ultramarine



french navy



5 Jules Women  
 SOL'S | 25.0142

6 Jules Men  
 SOL'S | 25.1424



white



black



charcoal grey



chestnut



kelly green



poppy red



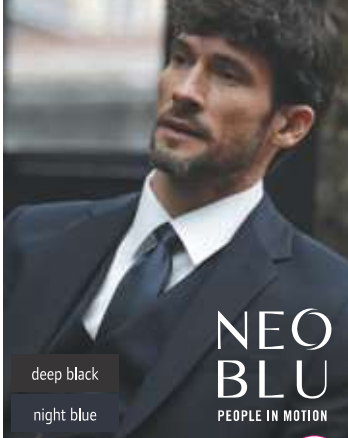
sunset pink



ultramarine



french navy



deep black

night blue

**NEOBLU**  
PEOPLE IN MOTION



deep black

night blue



deep black

night blue



deep black

night blue

**1 Tommy**  
NEOBLU | 24.3200



**2 Teddy**  
NEOBLU | 24.3201



**3 Theo**  
NEOBLU | 24.3202



**4 Teodor**  
NEOBLU | 24.3203



**Tie**  
120g/m<sup>2</sup>, 100% polyester twill, lining: 100% 210T polyester  
Length: 150cm, width: 7cm  
*onesize*  
👉50 📏1

**Bow Tie**  
146g/m<sup>2</sup>, 100% polyester satin  
Can be fastened on easily by a hook closure, already tied  
*onesize*  
👉100 📏1

**Tie**  
100% polyester, knitwear, lining: 100% polyester  
Straight hem, length: 142cm, width: 6.2cm  
*onesize*  
👉50 📏1

**Tie**  
126g/m<sup>2</sup>, 100% polyester, jacquard, lining: 100% polyester  
Length: 150cm, width: 7cm  
*onesize*  
👉50 📏1



**5 KXBTIE**  
Korntex | 76.BTIE



**6 KXTIES**  
Korntex | 76.TIE5



**7 KXTIE8**  
Korntex | 76.TIE8

**8 KXHK**  
Korntex | 76.KXHK



**Bow Tie**  
100% polyester satin  
Suitable for formal events, can be fastened on easily by a hook closure, already tied  
*onesize*  
👉200 📏50

**Slim Tie**  
100% polyester satin  
Length: 156cm, width: 5cm  
*onesize*  
👉200 📏10

**Classic Tie**  
100% polyester satin  
Length: 145cm, width: 8cm  
*onesize*  
👉200 📏10

**8 KXHK**  
Korntex | 76.KXHK

**Pocket Square**  
100% polyester satin  
Addition to tie or bow tie, size: 21x21cm  
*onesize*  
👉200 📏50

**9 K859**  
Kariban | 20.K859

**Bow Tie**  
100% polyester  
Can be fastened on easily by a hook closure, twill, adjustable size  
*onesize*  
👉80 📏1

**10 Gatsby**  
SOL'S | 25.0598

**Slim Tie**  
100% polyester satin  
Length: 152cm, width: 5cm  
*onesize*  
👉200 📏1



**9 K859**  
Kariban | 20.K859



**10 Gatsby**  
SOL'S | 25.0598





**1 PR750**  
Premier | 39.0750



**2 PR740**  
Premier | 39.0740



**3 PR730**  
Premier | 39.0730



**Satin Tie "Colours"**

100% polyester satin, woven

Slim shape, matching scarfs art. 39.0730 and 39.0740, size: 144x8.5cm, machine washable, 40° washable

onesize

👒72 📦12

**Ladies' Chiffon Scarf "Colours"**

40g/m<sup>2</sup>, 100% polyester chiffon

Lightweight ladies' scarf, matching tie art. 39.0750, length: 98cm, width: 16.5cm, hand wash

onesize

👒48 📦12

**Ladies' Business Scarf**

100% polyester, woven

Suitable for screen printing, matching tie art. 39.0750, size: 140x25cm, machine washable

onesize

👒48 📦12

**KARIBAN**



**4 KP802**  
Kariban K-Up | 20.0802

**Polyester Belt**

100% polyester

Metal buckle tone-in-tone, total length: 129cm, adjustable in length, width: 3.5cm

onesize

👒60 📦10

**5 KP807**  
Kariban K-Up | 20.0807

**Classic Leather Belt**

100% italian full grain leather

Belt made in Italy, total length: 125cm, can be adjusted to fit sizes XS-XXL by trimming the length as the buckle is detachable, width: 3cm, supplied in a cotton bag

onesize

👒40 📦5

**6 KP808**  
Kariban K-Up | 20.0808

**Classic Leather Belt**

100% italian leather

Belt made in Italy, total length: 125cm, can be adjusted to fit sizes XS-XXL by trimming the length as the buckle is detachable, width: 3.5cm, supplied in a cotton bag

onesize

👒40 📦5